



Agency Communications Plan: TotalEnergies Carolina Long Bay Offshore Wind Project (OCS-A 0545)

TotalEnergies Carolina Long Bay, LLC

1201 Louisiana Street, Suite 1300
Houston, TX 77002

Lease Area OCS-A 0545

December 1, 2023

Project Document N°:	OWUS-CLB-2022-2
Release Date:	20-Oct-2022
Revision:	Rev 2
Document Status:	
Checked by:	Jen Banks Date: 10/18/2022
Approved by:	Sylvain Riba Date: 10/18/2022

Revision Tracking

Version	Date Edited	Edited By	Checked By
3			
2	December 1, 2023	JBanks	SRiba
1	March 8, 2023	JBanks	SRiba

TABLE OF CONTENTS

TABLE OF CONTENTS	3
1.0 INTRODUCTION.....	4
1.1 Plan Overview.....	4
1.1.1 Points of Contact.....	4
1.2 About TotalEnergies	5
1.1.1 Commitment to Safety	5
1.3 Project Description.....	5
2.0 PLAN DEVELOPMENT	6
2.1 Core Principles	6
2.2 Guidelines and Requirements	6
2.2.1 Lease Stipulations.....	6
2.2.2 Progress Reports.....	7
3.0 ROLES AND RESPONSIBILITIES	8
3.1 Project Permitting Team	8
3.2 Agency Liaison.....	8
4.0 ENGAGEMENT ACTIVITIES	8
4.1 Agency Engagement.....	8
4.2 Meeting Protocols	14

1.0 INTRODUCTION

1.1 Plan Overview

TotalEnergies Carolina Long Bay (“TotalEnergies”) is the leaseholder of Lease Area OCS-A 0545 (“Lease Area”), an 54,937-acre area approximately 22 statute miles from the coast of North Carolina. TotalEnergies proposes to construct and operate a wind energy generation facility within the Lease Area called TotalEnergies Carolina Long Bay (“TE-CLB” or “Project”).

TotalEnergies has developed this Agency Communications Plan (“Plan”) to describe strategies for communicating with federal, state, and local agencies (“agencies”) with authority related to the Lease Area and outline specific methods for engaging and disseminating permit and trust resources information to these agencies. Implementation of the strategies and methods in this Plan will support early and active information sharing, focused discussions of potential issues or concerns, and collaborative identification of solutions that will help improve the quality and efficiency of agency decision-making processes while promoting sustainable development of the Project.

TotalEnergies and Cinergy Corp, a direct affiliate of Duke Energy (Duke Energy)¹, owner of the adjacent Lease Area OCS-A 0546, have agreed to hold joint agency meetings when possible as the projects advance. As such, many of the agency meetings held in support of Plan development have and will continue to be jointly hosted by both TotalEnergies and Duke Energy.

This Plan will continue to evolve and be updated as TotalEnergies progresses through different stages of the Project. If you would like to receive updated versions of this Plan when it becomes available or would like to sign up for updates, please send an email to Jen Banks, TotalEnergies Carolina Long Bay’s Agency Liaison, at jen.banks@totalenergies.com.

To learn more about the Project, visit www.carolinalongbay.com.

1.1.1 Points of Contact

TotalEnergies has identified the individuals in Table 1-1 as points of contact with agencies for this Plan. These individuals play key roles in the development, implementation, and maintenance of this Plan, as described in Section 3.0, Roles and Responsibilities.

Table 1-1. TotalEnergies Carolina Long Bay Key Points of Contact

Name	Role	Contact Information
Jen Banks	Permitting and Development Director Primary Point of Contact	Address: 1201 Louisiana Street, Ste 1300 Houston, TX 77002 Email: jen.banks@totalenergies.com
Sylvain Riba	Asset Director Secondary Point of Contact	Address: 1201 Louisiana Street, Ste 1300 Houston, TX 77002 Email: sylvain.riba@totalenergies.com

¹ Lease area OCS-A-0546 Duke Energy Renewables Wind, LLC, was reassigned to Cinergy Corp. on July 12, 2023.

1.2 About TotalEnergies

TotalEnergies Carolina Long Bay is a wholly-owned subsidiary of TotalEnergies Renewables USA, LLC (“TERUSA”), that is part of a global multi-energy company, TotalEnergies SE, that produces and markets energy. TotalEnergies SE has a 15-gigawatt (“GW”) offshore wind development portfolio globally and made its debut into the U.S. offshore wind market via the Bureau of Ocean Energy Management’s (“BOEM”) New York Bight (“NYB”) 2022 lease auction, where rights were obtained for developing the Attentive Energy Project. TotalEnergies subsequently participated in the BOEM Carolina Long Bay lease auction in May 2022 and obtained rights for Lease Area OCS-A 0545.

1.1.1 Commitment to Safety

Safety is a core value at TERUSA, who, as an energy provider, strives to be recognized as an industry reference for safety performance across projects and operational activities. All activities undertaken by TERUSA are conducted in accordance with its Code of Conduct and the Health, Safety, Environment & Quality (“HSEQ”) Charter, the primary principle of which states, “TERUSA holds safety, security, health, respect for the environment, customer satisfaction, listening to all stakeholders by way of an open dialogue, as paramount priorities.”

TERUSA is uncompromising when it comes to safety and requires that each individual demonstrate the strictest discipline in preventing accidents and deliberate damage and in protecting health, the environment, and product and service quality while addressing stakeholder expectations.

The TotalEnergies Carolina Long Bay Project will uphold the HSEQ charter and is committed to ensuring protection of the environment, health, and safety of all those involved in its activities. As such, this Plan is not only designed to inform and facilitate collaboration with the fishing community, but also to address any safety concerns associated with the Project and offshore wind development. TERUSA remains committed to identifying and mitigating risks as early as possible and welcomes input from the fishing community on safety-related matters.

1.3 Project Description

The Lease Area (Figure 1-1) is an 54,937-acre area approximately 22 statute miles (20 nautical miles) from its nearest shoreline point in North Carolina. TotalEnergies proposes to construct and operate the Project within the Lease Area. The Project is expected to reach commercial operation date (“COD”) in the early 2030’s.

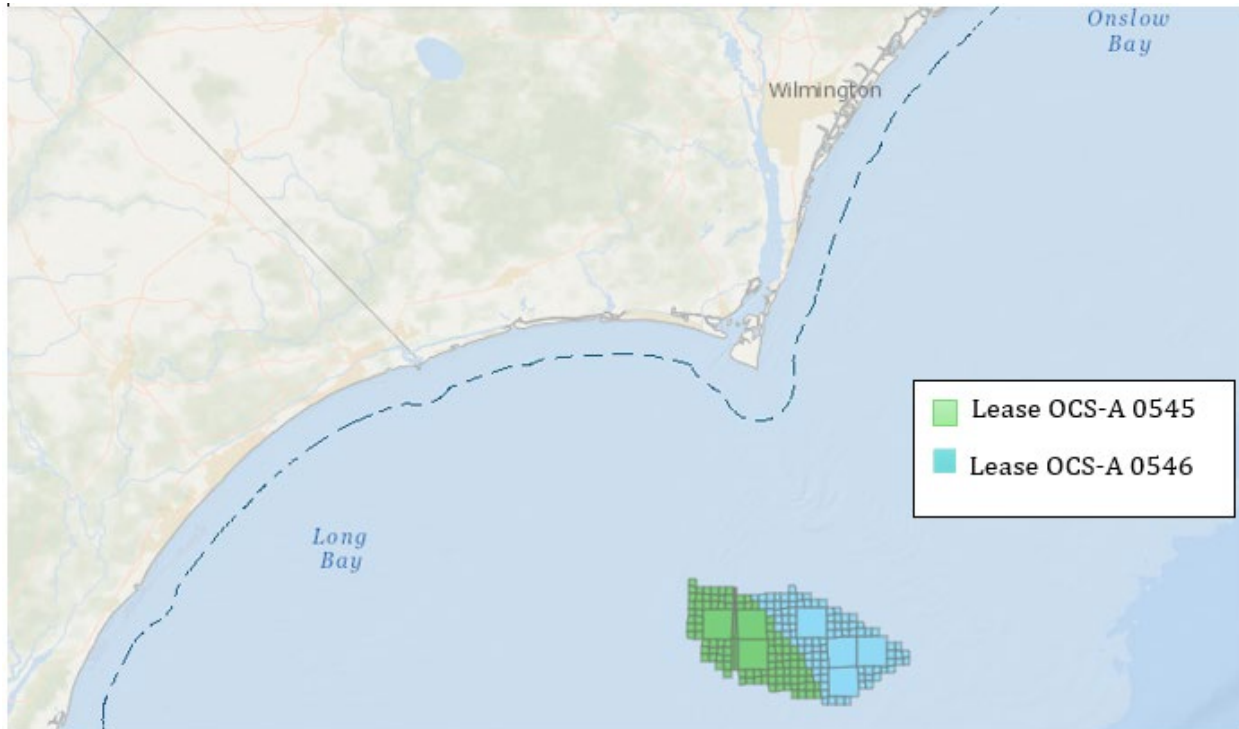


Figure 1-1. Lease Area OCS-A 0545 (TotalEnergies Carolina Long Bay, LLC) and Lease Area OCS-A 0546 (Duke Energy)

2.0 PLAN DEVELOPMENT

2.1 Core Principles

TotalEnergies is committed to frequent, open communication with agencies, so agencies stay informed and are well equipped to provide input and make timely decisions for the Project. To meet this commitment, TotalEnergies has identified three core principles as the basis of this Plan—communication, coordination, and collaboration—to support frequent, open communication with agencies and help inform a robust and efficient decision-making process.

2.2 Guidelines and Requirements

2.2.1 Lease Stipulations

This Plan incorporates stipulations required by BOEM in the commercial lease terms for Lease OCS-A 0545 Addendum C, including the following.

- Develop a publicly available Plan that:
 - describes strategies TotalEnergies intends to use for communicating with agencies with authority related to the Lease Area;
 - outlines specific methods for engaging with and disseminating information related to permits and trust resources to those agencies;
 - includes detailed information and protocols for regular engagement with permitting and resource agencies including the types of engagement activities, the frequency of

Agency Communications Plan: TotalEnergies Carolina Long Bay Offshore Wind Project

proposed engagements or meetings, meeting locations and virtual platforms, and contact information.

- Make the Plan available to BOEM and other agencies upon request.
- Provide BOEM and other permitting and resource agencies with authority related to the Lease Area a draft Plan for review and comment and host a meeting with each interested agency within 120 days of lease execution.
- Request agencies designate a primary point of contact(s) for communicating with TotalEnergies.
- Update the Plan or provide other written summaries of how TotalEnergies used information gained during agency engagement to inform Project planning and development.

2.2.2 Progress Reports

TotalEnergies also is required by lease stipulations to submit a progress report every six months (or as BOEM otherwise directs) detailing engagement activities with parties applicable to the Project, including agencies, during the site assessment term (i.e., until Construction and Operations Plan ["COP"] approval). The intent of this requirement is to improve TotalEnergies' communication and transparency with agencies and the general public that potentially may be affected by Project development activities. Specifically, the progress report must:

- summarize overall progress since the last progress report, or, in the case of the first report, since the Lease effective date;
- identify parties applicable to the Project;
- summarize, and update for subsequent reports, engagement with parties since the previous reporting period;
- document potential adverse effects from the Project to the interests of parties;
- document how, if at all, Project development (including design, implementation, and community investments) has been informed by or altered to address potential adverse effects;
- describe any anticipated or scheduled engagement activities for the next reporting period;
- include feedback from engagement with parties on transmission planning (prior to proposing any export cable route); and
- provide information that can be made available to the public and posted on the BOEM website.

If BOEM provides comments on the progress report (within 60 calendar days from receipt), TotalEnergies will address comments and modify the progress report accordingly.

3.0 ROLES AND RESPONSIBILITIES

3.1 Project Permitting Team

Per BOEM’s lease stipulation, TotalEnergies retains full responsibility for developing, implementing, and updating the Plan throughout the life of the Project. A crucial component to ensure outreach success is TotalEnergies’ commitment to frequent, open communication with agencies to support a well-informed Project development and decision-making process. As such, the TotalEnergies permitting team will aim to coordinate with appropriate agencies as early as possible and practicable to introduce the Project and team, establish points of contact, and, when feasible, present Project plans and processes that may require their input, review, or approval.

3.2 Agency Liaison

To support frequent, open communication with agencies, TotalEnergies has identified an Agency Liaison, Jen Banks, who will serve as the primary point of contact for agencies. The Agency Liaison will coordinate with agencies to, for example, share up to date Project information and progress; discuss agency review and permitting requirements; identify potential resource constraints; schedule meetings; and identify and make necessary changes to this Plan.

4.0 ENGAGEMENT ACTIVITIES

4.1 Agency Engagement

TotalEnergies will engage with agencies through a variety of engagement activities and approaches. Table 4-1 summarizes the types of engagement activities TotalEnergies will use to communicate, collaborate, and coordinate with agencies.

Table 4-1. Types of Engagement Activities for the Project

Engagement Activity	Description
Virtual or In-Person Meetings	TotalEnergies will host virtual, or, if requested, in-person, meetings with agencies. The meetings will serve as a platform for sharing new Project information and progress; discussing agency review and permitting requirements; identifying potential resource constraints; and identifying and making necessary changes to this Plan. Meeting format and topics will be determined in coordination with agencies and other attendees.
Website Updates	TotalEnergies will regularly update its Project website with information and news about the Project.
Other	Other engagement activities may include distribution of hardcopy or digital letters and invitations to participate in planning calls or other Project-related meetings or events; development and distribution of plans, permits, progress reports, documents, tools, or other materials; and execution of other outreach and information gathering and sharing activities.

TotalEnergies plans to coordinate with agencies that have authority related to the Lease Area. The types and frequency of engagement anticipated with these agencies include the following.

Federal Agencies: TotalEnergies and Duke Energy (jointly the “CLB Lessees”) have held joint introductory meetings with the following applicable federal agencies. The feedback gathered during these meetings has informed the content of this Plan.

- **BOEM:** The lead federal agency for the Project is BOEM, who is responsible for offshore wind leasing on the outer continental shelf (OCS). While the CLB Lessees have jointly met with BOEM, TotalEnergies and BOEM have agreed upon monthly one-on-one meetings with the Project’s BOEM coordinator starting in October 2022. In early 2023, these monthly meetings became joint meetings with TotalEnergies, Duke Energy and BOEM – to continue throughout the Preliminary Term of the lease. The frequency of meetings with BOEM may change based on Project needs. These meetings will be used to share Project updates, including permitting, surveys, schedule, and engineering updates. TotalEnergies will also coordinate with BOEM as appropriate for survey plan reviews and to schedule and execute pre-survey meetings.
 - **Primary Point of Contact**
 - Seth Theuerkauf, PhD
Projects and Coordination Branch, Office of Renewable Energy Programs
Bureau of Ocean Energy Management, U.S. Department of Interior
Seth.Theuerkauf@BOEM.gov
 - **Additional BOEM Contacts**
 - Annette Ehrhorn
Environmental Scientist
Annette.ehrhorn@boem.gov
 - Genevieve Brune
National Environmental Policy Act Coordinator
Genevieve.brune@boem.gov
- **National Oceanic and Atmospheric Administration - National Marine Fisheries Service (“NOAA Fisheries”):** NOAA Fisheries is responsible for the management of taking of marine mammals through permits and authorizations as well as fisheries and essential fish habitat reviews under the Endangered Species Act. TotalEnergies will schedule meetings with NOAA Fisheries as needed to discuss offshore survey activities, including geophysical and geotechnical surveys and benthic assessments, and required permits and approvals (e.g., Incidental Harassment Authorizations [“IHA”]). Based on feedback from a joint CLB Lessee meeting in September 2022, NOAA Fisheries prefers virtual meetings held quarterly starting in Q1 2023.
 - **Primary Point of Contact**
 - Cindy Cooksey
NOAA Fisheries Southeast Regional Office (“SERO”) - Habitat Conservation
Division
Cynthia.Cooksey@noaa.gov
 - **Additional NOAA Contacts:**
 - Kelly Shotts
NOAA Fisheries SERO - Chief, Interagency Cooperation Branch
Kelly.shotts@noaa.gov
 - Clay George
NOAA Fisheries SERO - Marine Mammal Biologist,
clay.george@noaa.gov

Agency Communications Plan: TotalEnergies Carolina Long Bay Offshore Wind Project

- Jordan “Jordy” Wolfe
NOAA Fisheries SERO – Fish Biologist and SERO GIS Coordinator
Jordan.wolfe@noaa.gov
- Brian Rosegger
NOAA Fisheries SERO – Environmental Compliance Marine Habitat Specialist
brian.rosegger@noaa.gov
- Rick DeVictor
NOAA Fisheries SERO - Branch Chief, South Atlantic Operations
rick.devictor@noaa.gov
- John Walter
NOAA Fisheries SERO - Deputy Director of Science and Council Services
john.f.walter@noaa.gov
- Noah Silverman
NOAA Fisheries SERO - NEPA Coordinator
noah.silverman@noaa.gov
- Pacer Wilber
NOAA Fisheries SERO - Branch Chief - Habitat Conservation Division/Atlantic & Caribbean Branch
pace.wilber@noaa.gov
- Cristi Reid
NOAA Fisheries Office of Policy – Headquarters NEPA Coordinator
cristi.reid@noaa.gov
- Jaclyn Daly
NOAA Office of Protected Resources - Fishery Biologist, Marine Mammal Protection Act Incidental Take Program
Jaclyn.daly@noaa.gov
- Carter Esch
NOAA Office of Protected Resources - Marine Resources Management Specialist
carter.esch@noaa.gov
- **U.S. Army Corps of Engineers (“USACE”)**: USACE is responsible for administering the process for permitting under Section 10 of the Rivers and Harbors Act and Sections 404 and 408 of the Clean Water Act (“CWA”). Based on feedback from a joint CLB Lessee meeting in October 2022, TotalEnergies anticipates meeting with the USACE Wilmington District, which has jurisdiction over the Lease Area, as needed. Depending on the potential landfall location for the Project, TotalEnergies will coordinate with the USACE Wilmington District or Charleston District. Based on feedback from a joint CLB Lessee meeting in October 2022, future meetings will be held on an as-needed basis to discuss installation of metocean buoys, proposed survey activities and cable routing options. Meetings will include Jennifer Bucatari with the Marine Minerals Program within BOEM, to identify and deconflict sand borrow areas along potential cable routes.
 - **Primary Point of Contact**
 - Mickey Sugg
Chief, Wilmington Regulatory Field Office
mickey.t.sugg@usace.army.mil
 - **Additional USACE Contact**

Agency Communications Plan: TotalEnergies Carolina Long Bay Offshore Wind Project

- Andrew Williams
Regulatory Project Manager, Wilmington Regulatory Field Office
Andrew.E.Williams2@usace.army.mil
- **U.S. Coast Guard (“USCG”):** The USCG is responsible for managing maritime resources, including marine safety, search and rescue, and aids to navigation. TotalEnergies will coordinate with the USCG as needed to gain an understanding of maritime activities in the Lease Area to help inform the design (e.g., turbine layout, navigation marking, export cable routes) of the Project. TotalEnergies will engage with the USCG to obtain permits for private aids to navigation, when publishing Local Notices to Mariners, and when preparing the Navigation Safety Risk Assessment. Based on feedback from a joint CLB Lessee meeting in October 2022, portions of the Project are within the jurisdiction of District 5 and District 7, with the representative from District 5 taking the lead during Project planning.
 - **Primary Point of Contact**
 - Matthew Creelman
District 5, USCG
matthew.k.creelman2@uscg.mil
 - **Additional USCG Contact**
 - Robert Webb
Carolina Long Bay Project Lead, District 5
robert.d.webb3@uscg.mil
- **U.S. Department of Defense (“DoD”) Siting Clearinghouse:** The DoD Siting Clearinghouse reviews proposed energy projects above a specified height to determine if they are compatible with military resources, including military installations, radar, test and training ranges, and airspace. TotalEnergies anticipates meeting with DoD Clearinghouse as needed to review the Project and identify any potential conflicts with military resources. Based on feedback from a joint CLB Lessee meeting in October 2022, Steve Sample will be the main point of contact for the DoD Siting Clearinghouse and will make connections to other military branches as needed.
 - **Primary Point of Contact**
 - Steve Sample
Executive Director
Military Aviation and Installation Assurance Siting Clearinghouse
steven.j.sample4.civ@mail.mil
- **U.S. Environmental Protection Agency (“EPA”):** The EPA manages Clean Air Act (“CAA”) OCS air permitting for offshore wind projects. TotalEnergies will coordinate with EPA Region 4 to discuss CAA permitting requirements for the Project. When planning studies (e.g., air quality modeling analyses), TotalEnergies will coordinate with EPA prior to confirm all planned studies meet all permitting and regulatory requirements. TotalEnergies will also coordinate with EPA on other site assessment and characterization activities, including the installation and use of metocean buoys.
 - **Primary Point of Contact**
 - Douglas White
EPA Region 4, Strategic Programs Office
white.douglas@epa.gov
- **U.S. Fish and Wildlife Service (“USFWS”):** USFWS is responsible for the conservation, protection, and management of fish, wildlife, plants, and their habitats. TotalEnergies

Agency Communications Plan: TotalEnergies Carolina Long Bay Offshore Wind Project

anticipates meetings with USFWS to discuss bird and bat surveys and to consult on Section 7 of the Endangered Species Act. If needed, meetings with USFWS will also be scheduled to discuss any requirements related to Class 1 areas for air emissions under the CAA (42 United States Code [“U.S.C.”] 7401 et seq.). Based on feedback from a joint CLB Lessee meeting in September 2022, USFWS prefers virtual meetings held quarterly starting in Q1 2023.

- **Primary Point of Contact**
 - Kathy Matthews
Fish and Wildlife Biologist/Renewable Energy Coordinator, Eastern NC
Ecological Services Field Office
kathryn_matthews@fws.gov
- **Additional USFWS Contacts**
 - Pete Benjamin
Eastern NC Ecological Services Field Office - Field Supervisor
pete_benjamin@fws.gov
 - Melissa Chaplin
SC Ecological Services Field Office - Endangered Species Biologist/Recovery
Team Lead
melissa_chaplin@fws.gov
 - Melanie Olds
SC Ecological Services Field Office - Regulatory Team Lead
melanie_olds@fws.gov
 - Christine Willis
South Atlantic-Gulf & Mississippi Basin Ecological Services - Regional Renewables
Energy Coordinator
Christine_Willis@fws.gov
 - Kevin Reynolds
South Atlantic-Gulf & Mississippi Basin Ecological Services - Assistant Regional
Director
kevin_reynolds@fws.gov
- **Federal Aviation Administration (“FAA”)**: The FAA has jurisdiction within 12 nautical miles of shore for obstruction evaluation and airport airspace analysis (“OE/AAA”) to assess potential impacts of wind turbines, or other tall structures. The turbines within Lease OCS-A 0545 will be more than 12 nautical miles from shore and therefore, the FAA will not have jurisdiction; however, BOEM will coordinate with the FAA to review construction plans for the Project. Project activities occurring within 12 nm of shore, such as survey activities in proximity to an airport or barge tow-outs of wind turbine components, may be subject to FAA jurisdiction. Based on feedback from a joint CLB Lessee meeting in October 2022, future meetings with the FAA will be held on an as-needed basis to discuss proposed survey and construction activities.
 - **Primary Point of Contact**
 - Cindy Whitten
Aeronautical Information Services - Wind Turbine Team Manager, Obstruction
Evaluation Group, AJV-A540
Cindy.Whitten@faa.gov
- **National Park Service (“NPS”)**: The National Park Service manages areas of natural and historic significance, though none are located in proximity to the Lease Area. Based on

Agency Communications Plan: TotalEnergies Carolina Long Bay Offshore Wind Project

feedback from a joint CLB Lessee meeting in October 2022, an NPS permit will be required if the cable passes through an NPS asset. Therefore, meetings with NPS will be on an as-needed basis until export cable routing and landfall discussions advance.

- **Primary Point of Contact**
 - Haigler "Dusty" Pate
NPS Region 2: South Atlantic-Gulf – Southeast Region Energy Specialist
Haigler_Pate@nps.gov
- **State Agencies:** TotalEnergies will schedule introduction meetings with state agencies during early stages of Project development (e.g., during site assessment activities). Quarterly update meetings will be offered to state agencies, and individual agency meetings will be scheduled as needed per topic. Depending on the potential landfall location for the Project, TotalEnergies may meet with departments of state and departments of environmental protection in North Carolina or South Carolina. Meeting topics with the state agencies may include state resources, including those related to coastal resources, and state permitting requirements. If more appropriate, depending on the stage or needs of the Project, an emailed Project update may be sent in lieu of a meeting.
 - **State Agency Contacts**
 - Jennifer Mundt
NC Department of Commerce - Assistant Secretary for Clean Energy Economic Development
jennifer.mundt@commerce.nc.gov
 - Daniel Govoni
NC Department of Environmental Quality - Policy Analyst & Federal Consistency Coordinator, Divisions of Coastal Management
daniel.govoni@deq.nc.gov
 - Trish Murphey
NC Department of Environmental Quality - Executive Assistant for Councils (SAFMC)
trish.murphey@deq.nc.gov
 - Maria Dunn
NC Wildlife Resources Commission Coastal Coordinator
maria.dunn@ncwildlife.org
 - Renee Gledhill-Earley
NC Department of Natural and Cultural Resources - Environmental Coordinator
renee.gledhill-earley@ncdcr.gov
 - Katie Harville
NC Department of Natural and Cultural Resources - Environmental Review Specialist
katie.harville@ncdcr.gov
 - Stephanie Ayers
NC Ports Authority Planning Director, Real Estate
stephanie.ayers@ncports.com
 - Brian Clark
North Carolina Ports Authority - Executive Director
brian.clark@ncports.com

Agency Communications Plan: TotalEnergies Carolina Long Bay Offshore Wind Project

- Peter Ledford
NC Office of the Governor - Clean Energy Director
peter.ledford@nc.gov
 - Elizabeth Johnson
SC Department of Archives and History - Director, Historical Services
ejohnson@scdah.sc.gov
 - Chris Stout
SC Department of Health and Environmental Control Ocean & Coastal Resource Management - Manager, Coastal Zone Consistency Section
stoutcm@dhec.sc.gov
 - Lorianne Riggini
SC Department of Natural Resources - Director of Environmental Programs
rigginl@dnr.sc.gov
 - Mark Messersmith
SC Ports Authority - Environmental Manager
mmessersmith@scspa.com
- **Local Agencies:** TotalEnergies will conduct introductory outreach with local agencies whose jurisdictions are in proximity to the Lease Area. Additional discussions will occur once onshore portions of the Project design are identified. Meeting topics with local agencies may include permitting requirements, project overviews, economic benefits associated with the project and community benefits.

4.2 Meeting Protocols

- All agency meetings will be conducted virtually, unless in-person meetings are requested by or agreed upon with the agency.
- TotalEnergies will coordinate the meeting schedule and agenda with the appropriate agency representatives, and an agenda and other supporting materials will be sent at least three days prior to the meeting whenever possible.
- TotalEnergies will capture draft meeting notes and attendees (including appropriate contact information) for agency meetings.
 - Notes will be sent to agencies for a two-week review unless an agency asks for a longer review period. If necessary, following the review period, updated notes will be made available to attendees.
- TotalEnergies will capture and track agency engagement activities throughout each stage of the Project.
- TotalEnergies' Agency Liaison will maintain and update a tracker of agency engagement activities and will share any substantive updates in the biannual Progress Reports (see Section 2.2.2).
- TotalEnergies' Agency Liaison and primary point of contact, Jen Banks, will oversee meeting and engagement protocols and this Plan will be updated with additional contact information as agencies identify primary points of contact.