

CAROLINA LONG BAY OFFSHORE WIND JOINT NATIVE AMERICAN TRIBES COMMUNICATION PLAN (OCS-A-0545 AND OCS-A-0546)

Prepared for:



Duke Energy Corporation
550 S. Caldwell Street Suite 600
Charlotte, NC 28202
Lease Area OCS-A 0546



TotalEnergies Renewables USA, LLC
1201 Louisiana Street Suite 1300
Houston, TX 77002
Lease Area OCS-A 0545

Prepared by SEARCH, Inc. and Reviewed by Atwell, LLC



November 3, 2023



CONTENTS

- 1. Introduction.....1**
- 2. Project Descriptions2**
 - 2.1. Lessee Information2
 - 2.1.1. Cinergy Corp, LLC2**
 - 2.1.2. TotalEnergies Renewables USA2**
 - 2.2. Lease Descriptions3
 - 2.2.1. OCS-A 0545.....3**
 - 2.2.2. OCS-A 0546.....3**
 - 2.3. Lessee Contacts5
- 3. Regulations and Lease Conditions.....6**
- 4. NATCP Goals and Core Values9**
- 5. Participating Parties 11**
 - 5.1. Native American Tribes/Tribal Nations 11
 - 5.1.1. Invited Participants..... 12**
 - 5.1.2. Participating Tribes/Tribal Nations..... 13**
 - 5.2. Lessee Tribal Liaison (TL) 14
- 6. Information and Data Sharing 17**
- 7. Engagement Strategies and Tools 19**
 - 7.1. Types and Frequency of Engagement Activities .. 19
 - 7.2. Engagement Topics21
 - 7.3. NATCP Development.....22
 - 7.4. Site Assessment/Characterization and Project Design/Development23
 - 7.5. Construction and Operations Plan (COP) Development26
 - 7.6. BOEM Environmental and Technical Review28



- 7.7. Construction Phase30
- 7.8. Operation and Maintenance (O&M)32
- 7.9. Decommissioning34
- 8. Key Performance Indicators/Metrics and Reporting36**
- 9. Conflict Resolution 41**
 - 9.1. Purpose and Objectives.....41
 - 9.2. Scope41
 - 9.3. Terminology and Roles & Responsibilities42
 - 9.4. Grievance Procedure43
 - 9.5. Performance Monitoring and Reporting44
- 10. Processes for Revising NATCP 45**
- 11. 508 Compliance Statement 47**
- 12. Conclusion..... 48**

APPENDICES

Appendix A: Post-Review Discoveries Plan

Appendix B: Previously Provided Tribal Engagement Survey

Appendix C: Regular Events Hosted/Sponsored by Tribes/Tribal Nations

FIGURES

Figure 1. Carolina Long Bay Wind Lease Areas..... 4

Figure 2. Role of the Tribal Liaison.15



Figure A.1. Post-Review Discovery Clause 5.3.7 Flowchart..... A-3

TABLES

Table 1. Project Team Key Points of Contact.....	5
Table 2. NATCP Core Values	9
Table 3. NATCP-Invited Participants.....	12
Table 4. Participating Tribes/Tribal Nations and Designated Tribal Representatives	13
Table 5. NATCP Engagement Activities.....	19
Table 6. Project Update/Topics	21
Table 7. NATCP Development-Phase Engagement Activities	22
Table 8. Site Assessment/Characterization Engagement Activities	25
Table 9. COP Development-Phase Engagement Activities	27
Table 10. BOEM Environmental and Technical Review–Phase Engagement Activities	29
Table 11. Construction-Phase Engagement Activities.....	31
Table 12. O&M-Phase Engagement Activities.....	33
Table 13. Decommissioning-Phase Engagement Activities.....	35
Table 14. NATCP KPIs	37
Table 15. Grievance Procedure Terms	42
Table 16. Grievance Procedure Roles and Responsibilities	42
Table A.1. Post-Review Discovery Clause Contact List	A-5
Table C.1. Regular Events Hosted/Sponsored by Tribes/Tribal Nations	C-1

1. INTRODUCTION

On May 11, 2022, the United States Bureau of Ocean Energy Management (BOEM) held an offshore wind auction for two lease areas (OCS-A 0545 and OCS-A 0546) (collectively referred to herein as the “Lease Areas”) in the Carolina Long Bay off the coasts of North Carolina and South Carolina. Cinergy Corp (herein referred to as Duke Energy)¹, a nonregulated indirect subsidiary of Duke Energy Corporation, is the holder of Lease OCS-A 0546, and TotalEnergies Renewables USA, LLC (TERUSA) is the holder of Lease OCS-A 0545 (hereinafter the two lease areas are referred to as the “Project Area,” and development of the Project Area is hereinafter referred to as the “Project”). Both leases were executed on June 22, 2022.

Duke Energy has retained the services of Atwell, LLC (Atwell) to support the development and implementation of the Native American Tribes Communication Plan (NATCP). Atwell is a full-service consulting, engineering, and construction services firm with offices in 10 states. Duke Energy and Atwell have retained the services of SEARCH, Inc. (SEARCH) to support Tribal engagement activities. SEARCH is an archaeology and cultural resources management company that specializes in the full spectrum of cultural heritage and cultural resources services related to archaeology, maritime archaeology, architectural history, archives, Tribal engagement services, and public affairs, among other cultural resources services.

Duke Energy, TERUSA, Atwell, and SEARCH (collectively referred to as the “Project Team”) believe that meaningful engagement with Tribes/Tribal Nations can benefit the Project as well as the Tribal communities. Early engagement will allow us to implement strategies to effectively communicate with the Tribes/Tribal Nations throughout the development of the Project. This NATCP describes the strategies, tools, procedures, and protocols the Project Team will use to engage and communicate with federally and state-recognized Native American Tribes/Tribal Nations to share Project information and solicit feedback from Tribes/Tribal Nations on how to develop a Project that avoids, minimizes, and/or mitigates impacts to environmental, social, economic, and cultural resources important to Native American communities.

¹ Lease area OCS-A-0546 Duke Energy Renewables Wind, LLC, was reassigned to Cinergy Corp. on July 12, 2023. Cinergy Corp. is a direct affiliate of Duke Energy.

2. PROJECT DESCRIPTIONS

The following sections provide background information about TERUSA and Duke Energy and descriptions of their respective, adjacent offshore wind lease areas, OCS-A 0545 and OCS-A 0546.

2.1. Lessee Information

2.1.1. Cinergy Corp, LLC

Cinergy Corp. is a nonregulated indirect subsidiary of Duke Energy Corporation and is the holder of Lease OCS-A 0546. Duke Energy was incorporated on May 3, 2005, and is an energy company headquartered in Charlotte, North Carolina. A chronological history of Duke Energy Corporation and its predecessor companies is available at <https://www.duke-energy.com/our-company/about-us/our-history>. Duke Energy Corporation employs 28,000 people. Duke Energy Corporation operates in the United States primarily through its direct and indirect subsidiaries. Duke Energy Corporation's primary business operations include Electric Utilities and Infrastructure, and Natural Gas Utilities and Infrastructure.

Duke Energy Corporation is a leading energy company focused on electric power and gas distribution operations, and other energy services in the United States – including a growing portfolio of renewable energy assets. The Electric Utilities and Infrastructure provides retail electric service through the generation, transmission, distribution, and sale of electricity to approximately 8.2 million customers within the Southeast and Midwest regions of the United States. The Natural Gas Utilities is responsible for the distribution of natural gas to retail customers in its North Carolina, South Carolina, Tennessee, Ohio, and Kentucky and serves approximately 1.6 million customers.

Duke Energy Corporation's corporate governance framework is designed to positively influence shareholder value and support timely responses to issues affecting the Company. Our corporate governance policies and systems are implemented in compliance with Securities and Exchange Commission (SEC) regulations, requirements pursuant to the Sarbanes-Oxley Act, and New York Stock Exchange (NYSE) listing standards. Detailed information on Duke Energy Corporation's corporate governance is available at <https://www.duke-energy.com/our-company/corporate-governance>.

2.1.2. TotalEnergies Renewables USA

TERUSA is part of a global multi-energy company, TotalEnergies SE, that produces and markets energy. TotalEnergies SE has an 11-gigawatt ("GW") offshore wind development portfolio globally and made its debut into the U.S. offshore wind market via the Bureau of Ocean

Energy Management’s (“BOEM”) New York Bight (“NYB”) 2022 lease auction, where rights were obtained for developing the Attentive Energy Project.

Safety is a core value at TERUSA, who, as an energy provider, strives to be recognized as an industry reference for safety performance across projects and operational activities. All activities undertaken by TERUSA are conducted in accordance with its Code of Conduct and the Health, Safety, Environment & Quality (“HSEQ”) Charter, the primary principle of which states, “TERUSA holds safety, security, health, respect for the environment, customer satisfaction, listening to all stakeholders by way of an open dialogue, as paramount priorities.”

TERUSA is uncompromising when it comes to safety and requires that each individual demonstrate the strictest discipline in preventing accidents and deliberate damage and in protecting health, the environment, and product and service quality while addressing stakeholder expectations.

2.2. Lease Descriptions

The following sections provide summary information on the two offshore wind lease areas covered by this NATCP: OCS-A 0545 and OCS-A 0546 (Figure 1). Additional information on the two lease areas is available at <https://www.boem.gov/renewable-energy/state-activities/carolina-long-bay>. The leases allow Duke Energy and TERUSA to characterize the site, propose a wind energy project, and if approved by BOEM, to construct a project to generate energy using wind turbine generators, including the installation of wind turbines on the Outer Continental Shelf (OCS) and associated infrastructure needed to bring the energy onshore.

2.2.1. OCS-A 0545

TERUSA is the holder of Lease OCS-A 0545 in federal waters located approximately 22 statute miles from Bald Head Island, North Carolina offshore on the Outer Continental Shelf. Lease OCS-A 0545 is located off the coast of North Carolina, southeast of Wilmington, North Carolina. Lease OCS-A 0545 abuts Lease OCS-A 0546 on its eastern border. Lease OCS-A 0545 covers approximately 54,937 acres.

2.2.2. OCS-A 0546

Duke Energy is the holder of lease OCS-A 0546 in federal waters located approximately 22 statute miles from Bald Head Island, North Carolina offshore on the Outer Continental Shelf. Lease OCS-A 0546 is located off the coast of North Carolina, southeast of Wilmington, North Carolina. Lease OCS-A 0546 abuts Lease OCS-A 0545 on its western border. Lease OCS-A 0546 area covers approximately 55,154 acres.

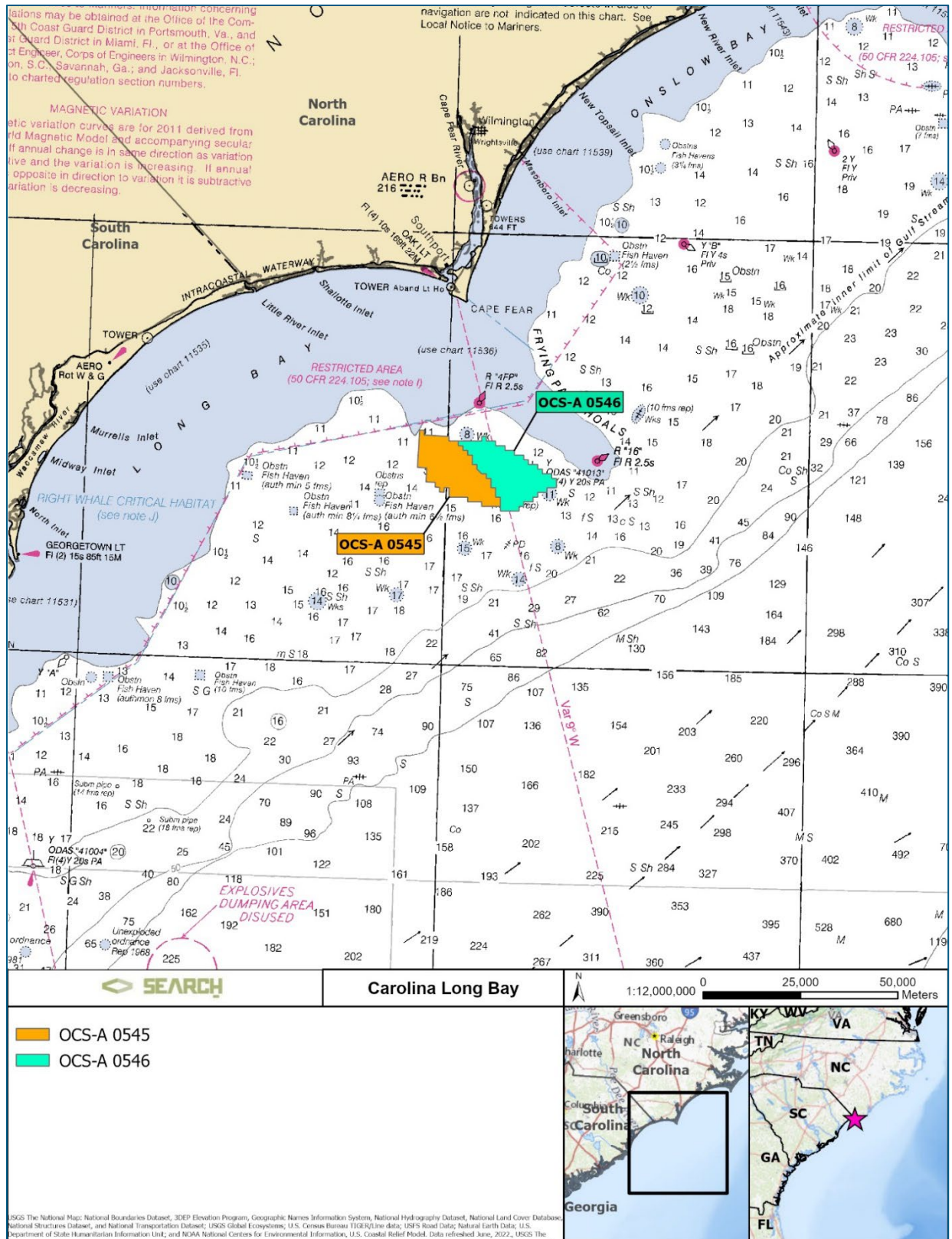


Figure 1. Carolina Long Bay Wind Lease Areas.



2.3. Lessee Contacts

Pursuant to the lease stipulation in Section 3.1.2.1 of Addendum C, the Project Team will retain full responsibility for developing, implementing, and updating the NATCP throughout the life of the Project. The Project Team has designated the individuals in Table 1 as playing key roles in development, implementation, and maintenance of the NATCP.

Table 1. Project Team Key Points of Contact

Name		Role	Contact Information
Spencer Hanes	Managing Director Duke Energy		Telephone: 1-704-382-4560 Email: Spencer.hanes@duke-energy.com
Jen Banks	Permitting and Development Director- Carolina Long Bay TotalEnergies Renewables USA, LLC		Telephone: 1-919-714-9258 Email: jen.banks@totalenergies.com
Justin Bedard	Duke Energy Tribal Liaison SEARCH		Telephone: 1-301-835-5646 Email: justin.bedard@searchinc.com
Jaime Bach	TotalEnergies Renewables USA Tribal Liaison SEARCH		Telephone: 1-760-707-7200 Email: jaime.bach@searchinc.com

3. REGULATIONS AND LEASE CONDITIONS

On November 1, 2021, BOEM published a Proposed Sale Notice (PSN) in the Federal Register for the Carolina Long Bay (ATLW-9) for Commercial Leasing for Wind Power on the Outer Continental Shelf in the Carolina Long Bay Area. The PSN included a lease stipulation requiring lessees to develop a NATCP. This lease provision, which requires the development of a publicly available NATCP that describes the strategies the lessee intends to use for communicating with federally recognized Tribes/Tribal Nations, was included as part of the Final Sale Notice published by BOEM on March 28, 2022. Lease OCS-A 0545 and Lease OCS-A 0546, executed between BOEM and TERUSA and BOEM and Duke Energy, respectively, on June 22, 2022, included this stipulation in Section 3.1.2.1 of Addendum C.0F.²

The stipulation requires the Project Team to invite federally recognized Tribes/Tribal Nations with cultural and/or historical ties to the Lease Areas to participate in the development of the NATCP. The NATCP must “outline specific methods for engaging with and disseminating information to federally recognized Tribes with cultural and/or historical ties to the Lease Area” and include the following elements, modified for editorial purposes from the original text in Addendum C, Section 3.1.2.1:

- Contact information for an individual retained by the Lessee as its primary point of contact with federally recognized Tribes, referred to as a Tribal Liaison (TL);
- Detailed information and protocols for regular engagement with federally recognized Tribes including, but not limited to, the types of engagement activities (e.g., one-on-one meetings, group meetings with federally recognized Tribes, open houses, open information sharing meetings);
- The frequency of proposed engagements/meetings (e.g., monthly, quarterly, bi-annually, annually), meeting locations and/or virtual platforms;
- Contact information (e.g., telephone numbers, email addresses, website addresses); and
- A semi-annual progress report that summarizes engagement with Tribes/Tribal Nations (reporting detailed in Section 3.1.1 of Addendum C).

As detailed in Section 3.1.2.1 of Addendum C, the NATCP must be available to BOEM and the federally recognized Tribes upon request, a draft NATCP must be provided to BOEM and federally recognized Tribes for review and comment, and a meeting must be held with federally recognized Tribes to discuss the NATCP within 120 days of lease execution. The lease

² <https://www.boem.gov/sites/default/files/documents/renewable-energy/state-activities/Commercial%20Lease%20OCS-A%200545.pdf>;
<https://www.boem.gov/sites/default/files/documents/renewable-energy/state-activities/Commercial%20Lease%20OCS-A%200546.pdf>.

stipulation also allows lessees to request that BOEM extend the 120-day deadline for submitting the draft NATCP and NATCP meeting with federally recognized Tribes/Tribal Nations.³

Lease stipulation 5.3.7: Post Review Discovery Clause requires lessees to stop work and notify BOEM if a potential archaeological resource is discovered during geotechnical exploration or any other bottom-disturbing site characterization activities in support of Site Assessment Plan (SAP) and/or Construction and Operations Plan (COP) submittal. Examples of archaeological resources provided in the lease stipulation include evidence of shipwreck, downed aircraft, or evidence of a pre-contact archaeological site. If these materials or any other evidence of a potential archaeological resource are identified, the lessee or their contractors are required to:

1. Immediately halt seafloor/bottom-disturbing activities within the area of discovery;
2. Notify BOEM within 24 hours of discovery and follow up with a written report within 72 hours of its discovery;
3. Keep the location of the discovery confidential and take no action that may adversely impact the archaeological resource until the BOEM has made an evaluation and instructs the lessee on how to proceed; and
4. If the site has been impacted by the lessee's project activities or impacts to the site cannot be avoided, conduct additional investigations, as directed by BOEM, to determine if the resource is eligible for listing in the National Register of Historic Places (NRHP).
5. If investigations indicate that the resource is potentially eligible for listing in the NRHP, BOEM will inform the lessee how to protect the resource or how to mitigate adverse effects to the site.

The Project team has developed a Post Review Discovery Plan (PRDP) to align project activities in federal waters with lease stipulation 5.3.7 (Appendix A). The PRDP establishes guidelines and procedures to be used by the Project Team and lessee subcontractors in the event potential submerged cultural resources are encountered during bottom disturbing activities within federal waters.⁴ In addition to aligning the Projects with lease stipulation 5.3.7,

³ In October 2022, BOEM, Duke Energy, and TotalEnergies mutually agreed to extend the 120-day deadline by an additional 120 days to allow BOEM to conduct government-to-government outreach to Tribes/Tribal Nations with historic and cultural ties to the Lease Areas. On February 6, 2023, and February 7, 2023, Duke Energy and Total Energies, respectively, requested a second 120-day extension in anticipation of receiving guidance from BOEM for Native American Tribal Communication activities (Guidance). On February 6, 2023 (after Duke Energy submitted its extension request to BOEM), BOEM issued its Guidance, which clarifies the intent of the NATCP lease stipulation and provides recommendations for how lessees may best develop effective communication plans, decrease Tribal burdens, and develop projects that are representative of the communities that could potentially be affected. On February 8, 2023, BOEM approved an extension for submission of the joint NATCP to March 23, 2023.

⁴ This PRDP only applies to Project activities in federal waters. At this stage in project development the CLB lessees have not identified export cable routes leading from their proposed projects or in which state the export cables will make landfall. Once the export cable routes and landfall locations have been



the PRDP also is intended to support BOEM in meetings its obligations under Section 106 of the National Historic Preservation Act (NHPA) (Title 54 U.S.C. § 306108) and its implementing regulations (36 CFR Part 800) and associated programmatic agreements (PAs) governing NHPA Section 106 compliance in the Carolina Long Bay.⁵

The Project team held a pre-survey meeting with federally recognized Tribes/Tribal Nations on April 5, 2023, to discuss the proposed Carolina Long Bay 2023 Buoy Location Geophysical Survey Campaign. During the meeting Representatives of the Seminole Tribe of Florida stated that their government views the inclusion of a Native American Graves Protection and Repatriation Act (NAGPRA) Action Plan into a project specific Unanticipated Discoveries Plan (UDP) for cultural resources and similar documents as best practice if there is the potential for encountering ancestral structures or artifacts during project activities. In response to this recommendation, the Project Team has incorporated NAGPRA specific elements into the PRDP. In addition, the CLB lessees will incorporate provisions for compliance with NAGPRA into the UDPs submitted to BOEM as part of their respective COP submissions.

identified, the PRDP will be updated to align CLB lessee activities with applicable state cultural resource laws and regulations and consultation requirements.

⁵ CLB Leases PAs are *Programmatic Agreement for Renewable Energy Activities offshore the South Atlantic States* (<https://www.boem.gov/South-Atlantic-PA-Executed/>) and *Programmatic Agreement for Renewable Energy Activities Offshore North Carolina* (<https://www.boem.gov/offshore-windfarm-development/>).

4. NATCP GOALS AND CORE VALUES

The Project Team recognizes Native American peoples as the original and current stewards of the lands and waters in which we work. We acknowledge and respect the enduring historical, cultural, and personal connections between Native American Tribes and Tribal Nations to the region, including those with a current and/or historical presence here. We believe that the insights and knowledge of Tribes/Tribal Nations can and should play an important role in the development of the offshore wind industry. The principal goal of this NATCP is to develop a respectful and collaborative relationship between the Project Team and Tribes/Tribal Nations with historical and cultural ties to the Project Area. Early, often, and meaningful engagement is critical to developing a working relationship between lessees and Tribes/Tribal Nations that is based on trust and mutual understanding.

The NATCP is based on three core values: communication, coordination, and collaboration between the Project Team and Tribes/Tribal Nations (Table 1). Through meaningful communication and collaboration, the Project Team desires to incorporate Native American perspectives, recommendations, and knowledge into Project development; address potential environmental, social, and cultural resource impacts; and create opportunities for Native American communities. Through coordination, we hope to avoid or minimize potential ocean user conflicts with Native American peoples, as well as involve Tribe/Tribal Nation members in our activities.

Table 2. NATCP Core Values

Core Value	Description
Communication	Throughout the Project lifecycle, the NATCP will provide the Project Team and Tribes/Tribal Nations with opportunities to exchange information, opinions, and recommendations to create an open and transparent dialogue. The Project Team will share information about Project development, activities, and how their activities could affect Tribes/Tribal Nations, both positively and negatively. Tribes/Tribal Nations will have an opportunity to share their opinions, perspectives, beliefs, and concerns about Project development and make recommendations on how to avoid, minimize, and/or mitigate impacts to important environmental and cultural resources as well as recommendations on partnering, economic development, and/or investment opportunities between Duke Energy, TERUSA, and Native American communities.
Coordination	The NATCP will provide the Project Team and the Tribes/Tribal Nations with opportunities to coordinate their activities to reduce potential ocean user conflicts and share the benefits of offshore wind development. Coordination could include working discussions between Project Team and Tribes/Tribal Nations to schedule geophysical and geotechnical surveys or construction activities around periods when Tribes/Tribal Nations use Project development areas for traditional activities or providing opportunities for Tribal participation in pre-survey, survey, and post-survey activities.



Core Value	Description
Collaboration	The NATCP will provide opportunities for the Project Team and Tribes/Tribal Nations to evaluate and discuss potential Project impacts and work together to develop measures, plans, and procedures to avoid, minimize, and/or mitigate Project impacts on environmental and cultural resources important to Native American communities. In addition, the NATCP will provide opportunities for Tribes/Tribal Nations and the Project Team to identify and collaborate on economic, social, and environmental projects and investments to improve the local environment and provide educational and economic opportunities for Tribe/Tribal Nation members.

The NATCP is an iterative document, which we expect will need to be modified and adapted as the Project Team and Tribes/Tribal Nations build a collaborative working relationship. Section 8.0 of this document outlines a process for updating/revising the NATCP based on the core values of communication, collaboration, and coordination to allow the Project Team and Tribes/Tribal Nations to continuously improve the quality of engagement activities.

5. PARTICIPATING PARTIES

The following sections identify the parties participating in this NATCP and describe their respective roles and responsibilities.

5.1. Native American Tribes/Tribal Nations

The NATCP requirement in Lease OCS-A 0545 and Lease OCS-A 0546 requires the Project Team to engage with federally recognized Tribes/Tribal Nations with historic and cultural ties to our Lease Areas. The Project Team recognizes and respects the special government-to-government relationship between the U.S. government and federally recognized Tribes/Tribal Nations as set forth in the Constitution of the United States, treaties, statutes, Executive Orders, and court decisions.

The Project Team also recognizes the special status and rights of all indigenous people to have a voice in the development of major infrastructure projects on or near their current and/or ancestral homelands. As a result, the Project Team has elected to invite state-recognized Tribes/Tribal organizations to participate in the NATCP. The Project Team believes it is important that all Native American people with historic and cultural ties to our Project Area have an opportunity to share their perspectives, opinions, concerns, and recommendations on Project development.

Under this NATCP, each participating Tribe/Tribal Nation designates a Tribal Representative (TR) to serve as the primary point of contact between their government and the Project Team. As the primary point of contact, the TR has the following roles/responsibilities:

- Receiving NATCP-related communications/updates from the Project Team and providing them to their Tribal government/leadership and Tribal members as they see fit or based on criteria established by their government/leadership;
- Attending, to the best of their ability, engagement activities, such as virtual and face-to-face meetings and communicating content of the meetings to their Tribal government/leadership and Tribal members; and
- Collecting questions, comments, and recommendations from Tribal government/leadership and members, communicating them to the Project Team TL, and relaying the Project Team's responses to the appropriate persons.

Additional TR roles or responsibilities that may arise during NATCP implementation can be added to the preceding list only with the consent of the participating Tribes/Tribal Nations.

5.1.1. Invited Participants

The Project Team invited the Tribes/Tribal Nations listed in Table 2 to participate in the development of the NATCP and designate a TR in a letter sent on November 23, 2022.

Table 3. NATCP-Invited Participants

Federally Recognized Tribes/Tribal Nations	
Eastern Band of the Cherokee Indians	Catawba Indian Nation
Shawnee Tribe ⁶	Tuscarora Nation
United Keetoowah Band of Cherokee Indians	Delaware Tribe of Indians
Delaware Nation	Nansemond Indian Nation
Chickahominy Indian Tribe	Chickahominy Indian Tribe Eastern Division
Monacan Indian Nation	Upper Mattaponi Indian Tribe
Rappahannock Tribe	Pamunkey Indian Tribe
Seminole Tribe of Florida	Cherokee Nation
North Carolina and South Carolina State-Recognized Tribes/Tribal Organizations	
Coharie Indian Tribe	Lower Eastern Cherokee Nation of South Carolina
Haliwa-Saponi	The Santee Indian Organization
Meherrin Indian Tribe	Sumter Tribe of Cheraw Indians
Occaneechi Band of Saponi Nation	Waccamaw Indian People
Sappony	Wassamasaw Tribe of Varnertown Indians
Waccamaw Siouan Tribe	Chaloklowa Chickasaw Indian People
Beaver Creek Indians	Eastern Cherokee, Southern Iroquois, and United Tribes of South Carolina
Edisto Natchez-Kusso Tribe of South Carolina	Natchez Tribe of South Carolina
Pee Dee Indian Nation of Upper South Carolina	Pee Dee Indian Nation of Beaver Creek
Pee Dee Indian Tribe	Lumbee Tribe of North Carolina

⁶ In an email dated December 9, 2022, BOEM informed the Project Team that the Shawnee Tribe had informed BOEM that their area of interest includes North Carolina and South Carolina and, as a result, BOEM recommended that the Project Team include the Shawnee Tribe in the NATCP. On December 16, 2022, the Project Team sent a letter to the Shawnee Tribe inviting them to participate in the NATCP and a copy of the Tribal Engagement Survey.

As part of our commitment to the core principle of collaboration, the NATCP invitation letter included a Tribal Engagement Survey (TES) to solicit feedback and recommendations from Tribes/Tribal Nations on the content and structure of the NATCP. The TES included questions about the preferred types of engagement activities, the frequency of engagement activities/meetings, and preferred meeting formats (in-person, virtual, etc.). The engagement protocols outlined in the following sections were developed based on the results of the TES. A copy of the TES can be found in Appendix A of this document.

5.1.2. Participating Tribes/Tribal Nations

The Tribes/Tribal Nations listed in Table 3 have responded to the invitation to participate in the NATCP (as of date) and designated a TR. The invited Tribes/Tribal Nations not listed in Table 3 did not respond to the Project Team’s initial outreach to participate in the development of the NATCP (as of March 9, 2023).

The Project Team is committed to a “the door is always open” policy and would welcome participation of invited Tribes/Tribal Nations if they choose to take part in the NATCP at any stage of Project development. If additional Tribes/Tribal Nations decide to participate in the NATCP, the Project Team will add them and their TR to Table 3. In addition, all the Tribes/Tribal Nations listed in Table 3 received a draft copy of the NATCP for review and comment and were invited to participate in the draft NATCP meeting.

Table 4. Participating Tribes/Tribal Nations and Designated Tribal Representatives

Tribe/Tribal Nation	Designated Tribal Representative(s)
Federally Recognized Tribes/Tribal Nations	
Catawba Indian Nation	Wenonah Haire, Tribal Historic Preservation Officer
Chickahominy Indian Tribe	Wayne Adkins, Tribal Historic Preservation Officer
Monacan Indian Nation	Shelly Livoti
Seminole Tribe of Florida	Tina Osceola: Tribal of Historic Preservation Officer Danielle Simon, Compliance Review Supervisor
United Keetoowah Band of Cherokee Indians in Oklahoma	Acee Watt, Tribal Historic Preservation Officer
Upper Mattaponi Indian Tribe	Kyle McLemore



Tribe/Tribal Nation	Designated Tribal Representative(s)
State-Recognized Tribes/Tribal Nations	
Eastern Cherokee, Southern Iroquois, and United Tribes of South Carolina	Chief Lamar Nelson
Haliwa-Saponi Indian Tribe	Vice Chief Marvin “Marty” Richardson
Lumbee Tribe of North Carolina	Kevin Melvin, Tribal Historic Preservation Officer
Coharie Indian Tribe	Greg Jacobs, Tribal Administrator
Edisto Natchez-Kusso Tribe of South Carolina	Chief John Creel Vice Chief Donnie Creel, Sr.
Lower Eastern Cherokee Nation of South Carolina	Vice Chief Dexter Sharp
Pee Dee Indian Tribe	Chief Prentis W. Parr Vice Chief Randolph Small
Waccamaw Indian People	Chief Harold (Buster) Hatcher Vice Chief Cheryl Cail
Piedmont American Indian Association	Chief Mary Louise Worthy
Wassamasaw Tribe of Varnertown Indians	Chief Lisa Collins Council Member Joshua Shumak

5.2. Lessee Tribal Liaison (TL)

Throughout implementation of the NATCP, the TL will serve as the single point of contact responsible for communicating a wide range of information to the Tribes/Tribal Nations from the various Project Team members and consultants and providing feedback from the Tribes/Tribal Nations to the Project Team to inform Project decision making (Figure 2).

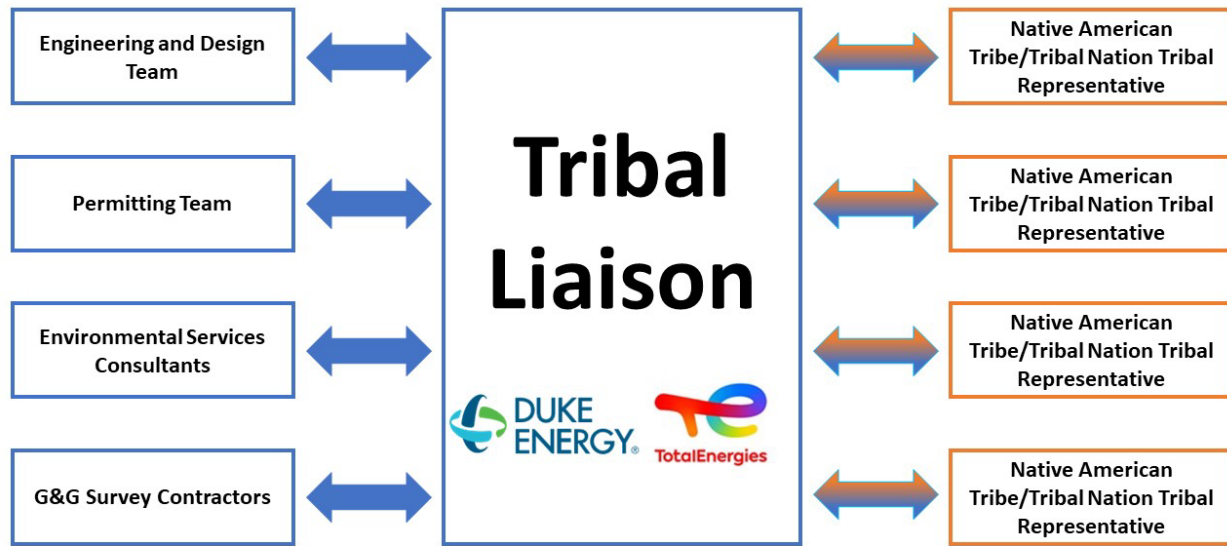


Figure 2. Role of the Tribal Liaison.

The TL is responsible for implementing all aspects of the NATCP including, but not limited to, the following:

- Preparing meeting materials (agendas, presentations, meeting summaries, etc.);
- Coordinating and leading face-to-face/virtual engagement meetings;
- Tracking action items and follow-up engagements and activities;
- Providing regular updates to TRs;
- Answering questions from TRs about the Project and its activities, and conversely, providing insight into Tribal concerns, recommendations, and perspectives to the Project Team;
- Communicating Tribe/Tribal Nation perspectives, information, and recommendations to the Project Team senior leadership/decision makers, design and environmental teams, and the Project Team contractors.

The goal of designating a single TL for each lease holder is to provide single points of contact for each company to facilitate communication between the Project Teams and TRs as well as to manage potential engagement fatigue by reducing the number of emails, calls, etc. necessary for TRs to get answers to questions or requests for information.

The Project Team will also be responsible for maintaining publicly available copies of this NATCP on its websites [Final URLs to be added when available]. As the NATCP is implemented, the Project Team anticipates that the NATCP will be modified through the process



outlined in Section 8 below. As the document is modified and updated, the Project Team will update the publicly available version of the document on their respective websites.

6. INFORMATION AND DATA SHARING

The Project Team is committed to developing meaningful and collaborative relationships with Tribes/Tribal Nations based on mutual respect and trust. To promote mutual respect and trust, the Project Team is committed to keeping any sensitive information shared by Tribes/Tribal Nations during engagement activities confidential. The Project Team will not share comments, feedback, statements, descriptions of cultural practices or beliefs, recommendations, or concerns shared by Tribes/Tribal Nations during NATCP activities without the written consent, in a letter or email, of the Tribe/Tribal Nation that provided the information. Similarly, the Project Team requests that Tribes/Tribal Nations not share any information provided by the Project Team marked as “confidential” or “draft” with outside parties.

Throughout the implementation of the NATCP, information shared by the Project Team with Tribes/Tribal Nations will include, but not be limited to, the following:

- Geophysical and geotechnical survey plans and survey results;
- Final environmental, socio-economic, and cultural resource investigation/survey reports generated by the Project Team and/or its consultants and subcontractors;
- Locational information for environmental, socio-economic, and cultural resources identified during the Project Team investigations in ArcGIS-compatible file formats (shapefiles, geodatabases, KMZ files, etc.);
- PowerPoint or other presentation materials summarizing the results of surveys/investigations conducted as part of site characterization, routing studies, and/or construction and operations Plan (COP)-supporting studies;
- Non-proprietary/non-confidential information on Project design/layouts under consideration such as, but not limited to:
 - Potential onshore and offshore export cable and transmission routes;
 - Substation and point of interconnection locations;
 - Landfall sites;
 - Inter-array cable layouts; and/or
 - Wind turbine generator and offshore substation locations/layouts;
- Project monitoring data and reports generated to satisfy BOEM requirements for National Environmental Policy Act (NEPA) and National Historic Preservation Act (NHPA) environmental, social, and cultural resource commitments, mitigation, and monitoring requirements.

Electronic versions of these datasets, reports, and presentation materials will be emailed to the TR when they become available and/or in advance of virtual or face-to-face meetings as



appropriate. If a Tribe/Tribal Nation would prefer or require printed hard copies of reports and other documents, the Project Team will provide them upon request. Pursuant to the roles and responsibilities outlined in Section 5, each TR will be responsible for providing the electronic data, reports, and presentations materials to their Tribal government/leadership and Tribal members as they see fit or based on criteria established by their government/leadership as well as responding to requests from Tribes/Tribal Nations for additional information or answering questions.

7. ENGAGEMENT STRATEGIES AND TOOLS

The Project Team will engage with Tribes/Tribal Nations to discuss a variety of topics through various engagement activities.

7.1. Types and Frequency of Engagement Activities

Table 5 summarizes the types of engagement activities the Project Team will use to communicate, collaborate, and coordinate with Tribes/Tribal Nations. The goals of these engagement activities include, but are not limited to, the following:

- The sharing of information between lessees and Tribes/Tribal Nations to create an open and respectful dialogue to educate each other and raise each other’s awareness;
- Identifying potential or emerging issues and collaborative problem solving;
- Gathering input in advance of key development activities or stages; and
- Collaboratively resolving issues identified by the Lessee or Tribe(s)/Tribal Nation(s).

Table 5. NATCP Engagement Activities

Engagement Activity	Description
Virtual Meetings	<p>The Project Team will host virtual meetings for Tribes/Tribal Nations participating in the NATCP. The meetings may include the following components:</p> <ul style="list-style-type: none"> – Optional opening prayer/invocation from TRs; – Opening statement by TRs and the Project Team; – Knowledge/information-sharing sessions between TRs and the Project Team; – Question-and-answer session; – Listening session where the Project Team will listen to concerns, recommendations, and feedback from TRs; and – Optional closing prayer/benediction from TRs. <p>Final agendas for individual meetings will be developed in consultation with Tribes/Tribal Nations in advance of the meeting. Based on feedback from Tribes/Tribal Nations, the Project Team will hold two types of virtual meetings:</p> <ul style="list-style-type: none"> – Joint meetings open to all federally and state-recognized Tribes/Tribal Nations – Meetings are open only to federally recognized Tribes/Tribal Nations. <p>The information shared by the Project Team will share the same information at both types of meetings.</p>

Engagement Activity	Description
Face-to-Face Meetings	<p>Individual: Project Team representatives will be available for individual face-to-face meetings with representatives of Tribal governments at conferences, such as the National Association of Tribal Historic Preservation Officers Conference or the North Carolina Tribal Unity Conference, to attend face-to-face meetings with TRs, Tribal governments, and Tribe/Tribal Nation members. The Project Team will defer to the Tribe/Tribal Nations regarding the format, agenda, and content of these meetings. The Project Team is also happy to host meetings either at Project offices or other venues (hotels, conference centers, etc.).</p> <p>Group: Project team will be available for face-to-face group meetings through attendance at conferences, such as the National Association of Tribal Historic Preservation Officers Conference or the North Carolina Tribal Unity Conference and will inform participating Tribes/Tribal Nations of our planned attendance and the availability of the Project team to meet face-to-face to provide project updates, listen to recommendations and concerns, and answer questions. Individual meeting formats and agendas will be developed collaboratively with Tribal representatives prior to each meeting.</p>
Electronic Newsletter/Email Update	<p>The Project Team will periodically prepare and send a Project newsletter or email update to TRs to provide them with regular updates on the status of the Project, major developments, regulatory activities, and information/updates on topics important to the Tribe/Tribal Nations. The newsletter will be delivered to TRs via email.</p>
Website Updates	<p>The Project Team will regularly update their respective Project websites with information and news about the Project.</p>

The TES sent to Tribes/Tribal Nations with the NATCP invitation included a question about holding joint virtual meetings between participating federally recognized and state-recognized Tribes/Tribal Nations. The Project Team recognizes that Tribal governments have different internal policies regarding joint meetings attended by federally and state-recognized Tribes/Tribal Nations and wanted to provide Tribes/Tribal Nations with an opportunity to comment on the possibility of joint meetings.

As a result of the feedback, the Project Team will initially host separate meetings for state and federally recognized Tribes/Tribal Nations. In the interest of transparency and open communication, the information shared during both types of meetings will be the same. The Project Team will also share the same electronic newsletters/email updates and website updates with all Tribes/Tribal Nations participating in the NATCP. The Project Team is also open to hosting joint meetings attended by state and federally recognized Tribes/Tribal Nations as the project progresses should state and federally recognized Tribes/Tribal Nations express a desire for joint meetings.

The Project Team is open to attending events hosted/sponsored by state and federally recognized Tribes/Tribal Nations to meet Tribe members in their communities. Examples could include annual powwows, meetings, conferences, fairs, etc. The Project Team would welcome invitations from Tribes/Tribal Nations and related organizations to attend Tribal events. Appendix B contains a list of regular events the Project Team has committed to attending. This list will be updated as additional invitations are received.

7.2. Engagement Topics

During the engagement activities listed in Table 5, the Project Team will share information on topics that the Tribes/Tribal Nations deemed important through the TES (Table 6).

Table 6. Project Update/Topics

Topics	
Environmental Justice	Marine and Terrestrial Archaeological Resources
Physical Oceanographic/Meteorological Conditions	Visual Effects on Above Ground Historic and Traditional Cultural Properties
Water Quality	Recreation and Tourism
Coastal and Terrestrial Habitats	Geological Resources
Benthic and Shellfish Resources	Commercial and Recreational Fishing
Fish and Essential Fish Habitat	Marine and Coastal Land Uses
Marine Mammals	Marine Transportation and Navigation
Sea Turtles	Public Services
Avian and Bat Species	Project Siting and Design Development
Visual Resources	Offshore and Onshore Site Investigations
Site Characterization and Assessment Studies	State and Local Government Consultations
Employment, Economics, and Demographics	Federal Government Consultation
Geological Resources	Air Quality

The Project Team knows that Tribes’/Tribal Nations’ time is very valuable and wants to promote meaningful communication, coordination, and collaboration without being overly burdensome to Tribes/Tribal Nations. The Project Team also recognizes that various phases in the Project development process will require different levels of engagement with Tribes/Tribal Nations with fewer engagement activities during periods of relatively low activity and more engagement

activities during periods of increased activity or when the Project Team is making important Project decisions.

As a result, types and frequency of engagement activities have been tailored to specific needs of each phase of Project development. The Project Team has divided the NATCP into the following phases:

- NATCP Development;
- Site Assessment/Characterization (including Pre-Survey Meetings);
- COP Development;
- BOEM Environmental and Technical Review;
- Construction;
- Operation and Maintenance (O&M); and
- Decommissioning.

The following sections provide an overview of each of these phases, including the duration of the phase, discussion topics, and engagement activities that will take place during each phase.

7.3. NATCP Development

The NATCP Development Phase begins with lease execution and ends with submittal of the final NATCP. Activities during this phase include all engagements and conversations with Tribes/Tribal Nations to develop the NATCP, and it is anticipated to last approximately six (6) months. The principal engagement goals during this phase are to develop the NATCP with Tribes/Tribal Nations, receive feedback and recommendations from Tribes/Tribal Nations on the content and structure of the NATCP, and finalize the NATCP. Table 7 summarizes the engagement activities that will take place during this phase.

Table 7. NATCP Development-Phase Engagement Activities

Engagement Activity	Engagement Type	Description/Topics Discussed	Timing/Frequency
NATCP Invitation	Formal Letter (hardcopy)	Letter inviting federally and North Carolina and South Carolina state-recognized Tribes/Tribal Nations to participate in development and implementation of NATCP	November 23, 2022
Tribal Engagement Survey (TES)	Digital feedback survey	TES sent with invitation letter to solicit feedback from Tribes/Tribal Nations on the types, frequency, and content of NATCP engagement activities	November 23, 2022

Engagement Activity	Engagement Type	Description/Topics Discussed	Timing/Frequency
Draft NATCP Submission	Document submission	Project Team submits draft NATCP to participating federally recognized Tribes/Tribal Nations and BOEM for review and comment	March 10, 2023
NATCP Review and Comment	Document Review and Comment	Federally recognized Tribes/Tribal Nations receive draft NATCP for review and comment	March 10, 2023
NATCP Meeting	Virtual meetings	Meeting between Project Team and federally recognized Tribes/Tribal Nations to discuss draft NATCP and finalize document	April 5, 2023
NATCP Meeting	Virtual meetings	Meeting between Project Team and North Carolina and South Carolina state-recognized Tribes/Tribal Nations to discuss draft NATCP and finalize document	May 24, 2023
Revised NATCP Submission	Document submission	Project Team submits final NATCP to participating Tribes/Tribal Nations for review, comment, and/or approval	October 13, 2023

7.4. Site Assessment/Characterization and Project Design/Development

The Site Assessment Phase and Project Design/Development includes the following activities:

- Presenting draft geophysical and geotechnical Survey Plan(s) in support of geophysical (side scan sonar, sub-bottom profiler, etc.) and geotechnical (coring) surveys to Tribes/Tribal Nations;
- Receiving feedback and recommendations from Tribes/Tribal Nations on the content and structure of the Survey Plan(s);
- Submitting the final Survey Plan(s) to BOEM;
- Producing studies to support Project engineering and archaeological investigations;
- Conducting site characterization surveys and studies such as marine mammal, benthic habitat, and fisheries;
- Potentially submitting a site assessment plan (SAP) to BOEM to install a Floating Light Detection and Ranging (LiDAR) buoy within the Lease Areas to collect meteorological information;

- Array design and siting, such as foundation design, array locations, transit corridors, if any, etc.; and
- Transmission corridor planning and siting, including any additional facilities such as those accompanying direct current (DC) cables, onshore facilities plan, etc.

The Project Team estimates this phase could last up to five (5) years. The principal engagement goals during this phase include, but are not limited to, the following:

- The Project Team will provide the Tribes/Tribal Nations with opportunities to review and comment on proposed site characterization survey and study plans and the SAP;
- Tribes/Tribal Nations will communicate their concerns, information requests, and recommendations to Project Team to inform methods and objectives of site characterization surveys and studies;
- The Project Team and their site characterization survey and study contractors will coordinate with Tribes/Tribal Nations to ensure study activities do not interfere with Tribe/Tribal Nation members' use of ocean resources;
- The Project Team and Tribes/Tribal Nations will discuss opportunities for collaboration during site characterization studies and surveys such as sharing knowledge or identifying opportunities for Tribe/Tribal Nation members to participate in activities; and
- The Project Team will communicate the findings of the various site characterization surveys and studies to the Tribes/Tribal Nation.
- The Project Team will provide updates to Tribes/Tribal Nations concerning the potential layout of offshore project components (wind turbine generator locations, inter-array cable layout, offshore substation locations, etc.) and onshore project components (landfall site, onshore cable/transmission lines, substation location, etc.) and solicit feedback and input from Tribes/Tribal Nations on various design/development decisions.

Table 8 summarizes engagement activities that will take place during this phase.



Table 8. Site Assessment/Characterization Engagement Activities

Engagement Activity	Engagement Type	Description/Topics Discussed	Timing/Frequency
Geophysical and Geotechnical Pre-Survey Meetings	Virtual Meetings	Project Team will present and request feedback on geophysical and geotechnical survey plans. The Project team will notify Tribes/Tribal Nations at least 15 calendar days prior to the date of the proposed tribal pre-survey meeting.	Pursuant to BOEM lease stipulations, meetings will be held at least 30 days prior to survey campaigns
Regular Project Update Meeting	Virtual Meetings	Project Team will host a regular virtual meeting open to Tribes/Tribal Nations to share Project updates, such as Project design development, and share and request feedback on site characterization study plans and results and answer questions.	Quarterly
Project Update / Progress Reports	Progress Reports/ Website Updates	Project Team will share Progress Reports with Project updates	Bi-annually (twice per year)
Face-to-face Meetings with Tribes/Tribal Nations	Group meetings	Project team will be available for face-to-face group meetings through attendance at conferences, such as the National Association of Tribal Historic Preservation Officers Conference or the North Carolina Tribal Unity Conference and inform participating Tribes/Tribal Nations of our planned attendance and the availability of the Project team to meet face-to-face. Project Team will share Project updates, discuss Project developments, identify ways to collaborate, answer questions, and listen to concerns and feedback.	Annually
	Individual meetings	As project activities dictate, Project Team representatives will be available for individual face-to-face meetings with representatives of Tribal governments at conferences, such as the National Association of Tribal Historic Preservation Officers Conference or the North Carolina Tribal Unity Conference. Project Team will share Project updates, discuss Project development, identify ways to collaborate, answer questions, and get Tribal government feedback.	As requested

7.5. Construction and Operations Plan (COP) Development

During this phase, the Project Team will analyze, and review information collected during the Site Assessment Phase to develop the Project's COPs. The COPs will describe how the Project Team will construct and operate commercial wind projects on Lease Areas OCS-A 0545 and OCS-A 0546 and will include a description of all planned facilities, as well as a description of proposed construction activities, commercial operations, and conceptual decommissioning plans. The COPs will also summarize results of the Site Assessment Phase; biological, geotechnical, socioeconomic, and cultural resources studies; provide an assessment of the Project's potential impacts; and proposed measures for avoiding, minimizing, reducing, eliminating, mitigating, and monitoring impacts. The Project Team anticipates this phase will last one to two (1–2) years.

The principal engagement goals during this phase include, but are not limited to, the following:

- The Project Team will collaborate with the Tribes/Tribal Nations during studies conducted in support of the COPs by providing opportunities to review and comment on study plans and draft reports, such as the marine archaeological resources assessment (MARA); terrestrial archaeological resources assessment (TARA); historic resources visual effects assessment (HRVEA); and studies to evaluate potential impacts to marine species (such as marine mammals), fisheries, and terrestrial vegetation and wildlife species;
- The Project Team and Tribes/Tribal Nations will discuss opportunities for collaboration during studies conducted in support of the COPs, such as sharing knowledge or identifying opportunities for Tribe/Tribal Nation members to participate in study activities;
- The Project Team will communicate with the Tribes/Tribal Nations during the development of the Project Design Envelope (PDE) for the Project and solicit feedback and recommendations on the PDE;
- The Project Team will communicate results of the COP studies and the Project's potential impacts on environmental, social, economic, and cultural resources to the Tribes/Tribal Nations; and
- The Project Team will collaborate with the Tribes/Tribal Nations to incorporate, as feasible, their perspectives, opinions, concerns, and recommendations into proposed measures to avoid, minimize, mitigate, and/or monitor Project impacts to environmental, social, and/or cultural resources.

Table 9 summarizes the engagement activities that will take place during this phase.



Table 9. COP Development-Phase Engagement Activities

Engagement Activity	Engagement Type	Description/Topics Discussed	Timing/Frequency
Regular Project Update Meeting	Virtual Meetings	Project Team will host a regular virtual meeting open to Tribes/Tribal Nations to share Project updates, such as Project design development, and share and request feedback on site characterization study plans and results and answer questions.	Quarterly
Project Update / Progress Reports	Progress Reports/ Website Updates	Project Team will share Progress Reports with Project updates	Bi-annually (twice per year)
Face-to-face Meetings with Tribes/Tribal Nations	Group meetings	Project team will schedule face-to-face group meetings to coincide with conferences, such as the National Association of Tribal Historic Preservation Officers Conference or the North Carolina Tribal Unity Conference. Project Team will share Project updates, discuss Project developments, identify ways to collaborate, answer questions, and listen to concerns and feedback.	Annually
	Individual meetings	As project activities dictate, Project Team representatives will be available for individual face-to-face meetings with representatives of Tribal governments. Project Team will share Project updates, discuss Project development, identify ways to collaborate, answer questions, and get Tribal government feedback.	As requested

7.6. BOEM Environmental and Technical Review

This phase will begin when BOEM issues a Notice of Intent (NOI) to prepare an Environmental Impact Statement (EIS) to conduct its National Environmental Policy Act (NEPA) environmental and technical reviews for the COPs. The NOI will also initiate BOEM's NHPA Section 106 review of the COPs. At the conclusion of the expected two-year NEPA review period, BOEM will decide whether to approve, approve with modifications, or disapprove the COPs. BOEM's decision will be presented in a Record of Decision (ROD) to complete the NEPA review. The completion of BOEM's NHPA Section 106 review will either be incorporated into the ROD or conclude with a standalone Memorandum of Agreement (MoA) detailing how potential adverse effects to historic properties will be resolved.

The principal engagement goals during this phase include, but are not limited to, the following:

- The Project Team will regularly communicate with the Tribes/Tribal Nations to provide updates on Project Team activities to support the BOEM environmental and technical review;
- The Project Team will respond to questions or information requests from Tribes/Tribal Nations and communicate responses and/or the requested information in timely manner;
- The Project Team will coordinate with federally recognized Tribes/Tribal Nations and BOEM to provide information in support of BOEM and Tribe/Tribal Nations government-to-government consultations;⁷
- The Project Team will communicate and coordinate with BOEM, state-recognized Tribes/Tribal Nations, and federally recognized Tribes/Tribal Nations consulting parties throughout the NHPA Section 106 review of the COP, providing relevant studies and reports, attending NHPA Section 106 meetings, answering questions, and responding to information requests; and
- If the NHPA Section 106 review determines the Project will adversely affect historic properties of historical and/or cultural significance to federally and state-recognized Tribes/Tribal Nations, the Project Team will collaborate to consult with federally and state-recognized Tribes/Tribal Nations to develop proposals to avoid, minimize, and/or mitigate adverse effects.

Table 10 summarizes the engagement activities that will take place during this phase.

⁷ The Project Team is aware that they will not participate in any government-to-government consultations between BOEM and federally recognized Tribes/Tribal Nations but will provide supporting materials such as reports, answers to questions, maps, etc. to Tribes/Tribal Nations and/or BOEM to support consultations.



Table 10. BOEM Environmental and Technical Review–Phase Engagement Activities

Engagement Activity	Engagement Type	Description/Topics Discussed	Timing/Frequency
Regular Project Update Meeting	Virtual Meetings	Project Team will host regular, separate virtual meetings open to Tribes/Tribal Nations to share Project updates such as the status of BOEM’s NEPA and NHPA reviews of the COP; updates to relevant reports and studies based on NEPA/NHPA Section 106 review feedback; and, if necessary, the development of treatment plans to avoid, minimize, and/or mitigate adverse effects to historic properties	Quarterly
Project Update	Email/ Newsletter/ Website Update	Project Team will provide TRs with regular Project updates	Bi-annually
NEPA Public Meetings	Virtual and/or In-person meetings	Project Team will attend and participate in BOEM’s Scoping Phase, Draft EIS, and Final EIS public meetings. These meetings will be open to federally and state-recognized Tribes/Tribal Nations, and the Project Team understands some of these meetings will also serve as NHPA Section 106 consultation meetings pursuant to BOEM’s regular use of the NEPA process for Section 106 purposes (36 CFR § 800.8(c))	Schedule to be determined by BOEM
NHPA Section 106 Consultation Meetings	Virtual and/or In-person meetings	The Project Team will attend and participate in NHPA Section 106 consultation meetings organized and hosted by BOEM. Meetings will be held to share and review the findings of Project Team’s MARA, TARA, and HRVEA; present and discuss BOEM’s Finding of Effect; and discuss proposed measures to resolve adverse effects (if necessary)	Schedule to be determined by BOEM
Face-to-face Meetings with Tribes/Tribal Nations	Group meetings	Project team will schedule separate group meetings for state and federally recognized Tribes/Tribal Nations to share Project updates, discuss Project developments, identify ways to collaborate, answer questions, and listen to concerns and feedback.	Annually
	In-person meeting	Project Team representatives will offer to travel to participating Tribe/Tribal Nations and/or convene local group meetings of Tribes/Tribal Nations for face-to-face meetings with representatives of the Tribal government to share Project updates, discuss Project development, identify ways to collaborate, answer questions, and get Tribal government feedback	As requested (open invitation)

7.7. Construction Phase

During this phase, the Project Team will construct the proposed offshore wind farm within the Lease Areas. Construction activities will be aligned with the requirements and conditions of the NEPA ROD and NHPA Section 106 MoA. The Project Team anticipates it will take two to three (2–3) years to construct the proposed Project.

The principal engagement goals during this phase will include, but are not limited to, the following:

- The Project Team will communicate regular Project construction updates and the status of the various avoidance, minimization, and mitigation efforts/commitments to Tribes/Tribal Nations through construction;
- The Project Team will coordinate with Tribes/Tribal Nations to schedule construction vessel movements and construction activities to avoid or minimize impacts to the Tribes'/Tribal Nations' uses of the ocean, coast, and lands near or adjacent to Project construction areas;
- The Project Team will coordinate the participation of Tribe/Tribal Nations in environmental, social, and/or cultural resource mitigation and monitoring programs as defined in the Project ROD, MoA, and/or any other agreements between the Project Team and Tribes/Tribal Nations; and
- The Project Team will regularly communicate the results of Construction Phase environmental, social, and cultural resource monitoring reports.

Table 11 summarizes the engagement activities that will take place during this phase.



Table 11. Construction-Phase Engagement Activities

Engagement Activity	Engagement Type	Description/Topics Discussed	Timing/Frequency
Regular Project Update Meeting	Virtual Meetings	Project Team will host a regular, separate virtual meeting for state and federally recognized Tribes/Tribal Nations to share Project construction updates	Biannually (twice per year)
Project Update	Email/ Newsletter/ Website Update	Project Team will provide TRs with regular Project updates	Bi-annually
Face-to face Meetings with Tribal/Tribal Nation Governments	Group meetings	Project team will schedule separate group meetings for state and federally recognized Tribes/Tribal Nations to share Project updates, discuss Project developments, identify ways to collaborate, answer questions, and listen to concerns and feedback.	Annually
	Individual meetings	Project Team representatives will offer to travel to participating Tribe/Tribal Nations and/or convene local group meetings of Tribes/Tribal Nations for face-to-face meetings with representatives of the Tribal government to share Project updates, discuss Project development, identify ways to collaborate, answer questions, and get Tribal government feedback	As requested (open invitation)

7.8. Operation and Maintenance (O&M)

During the O&M Phase, the Project Team will operate and perform routine maintenance on their offshore wind farm within the Lease Areas. The initial operations term for each of the Lease Areas is 33 years.⁸

The principal engagement goals during this phase include, but are not limited to, the following:

- The Project Team will communicate regular O&M updates to Tribes/Tribal Nations;
- The Project Team and Tribes/Tribal Nations will coordinate and collaborate the review of O&M Phase environmental, socio-economic, and cultural resources monitoring reports; and
- The Project Team will coordinate with Tribes/Tribal Nations to schedule O&M activities and vessel movements to avoid or minimize impacting or interfering with Tribes'/Tribal Nations' long-standing uses of the ocean, coast, and lands near or adjacent to Project construction areas.

Table 12 summarizes the engagement activities that will take place during this phase.

⁸ The Project Team may elect to request an extension to the operations term from BOEM.



Table 12. O&M-Phase Engagement Activities

Engagement Activity	Engagement Type	Description/Topics Discussed	Timing/Frequency
Regular Project Update Meeting	Virtual Meetings	Project Team will host a regular, separate virtual meetings for state and federally recognized Tribes/Tribal Nations to share Project construction updates	Annually
Project Update	Email/ Newsletter/ Website Update	Project Team will provide TRs with regular Project updates	Annually
Face-to-face Meetings with Tribes/Tribal Nations	Group meetings	Project team will schedule separate group meetings for state and federally recognized Tribes/Tribal Nations to share Project updates, discuss Project developments, identify ways to collaborate, answer questions, and listen to concerns and feedback.	As requested (open invitation)
	Individual meetings	Project Team representatives will offer to travel to participating Tribe/Tribal Nations and/or convene local group meetings of Tribes/Tribal Nations for face-to-face meetings with representatives of the Tribal government to share Project updates, discuss Project development, identify ways to collaborate, answer questions, and get Tribal government feedback.	As requested (open invitation)

7.9. Decommissioning

At the end of the Project's life, the Project Team will submit a decommissioning application to BOEM. BOEM will then review and determine whether to approve, disapprove, or approve with modifications the decommissioning application. Once approved, the Project Team would decommission and remove its Project components. The Project Team anticipate this process will take two to four (2–4) years to complete.

The principal engagement goals during this phase include, but are not limited to, the following:

- The Project Team will collaborate with Tribes/Tribal Nations to develop a decommissioning plan that incorporates and addresses, to the greatest extent feasible, Tribal concerns about environmental, social, and cultural resources impacts from Project decommissioning;
- The Project Team will communicate regular decommissioning planning updates to Tribes/Tribal Nations and, during decommissioning activities, provide updates on the status/progress of decommissioning works and any required environmental, social, and/or cultural resources monitoring programs; and
- The Project Team will coordinate with Tribes/Tribal Nations to schedule decommissioning activities and associated vessel activities to avoid or minimize impacting or interfering with Tribes'/Tribal Nations' long-standing uses of the ocean, coast, and lands near or adjacent to Project construction areas.

Table 13 summarizes the engagement activities that will take place during this phase.



Table 13. Decommissioning-Phase Engagement Activities

Engagement Activity	Engagement Type	Description/Topics Discussed	Timing/ Frequency
Decommissioning Plan Development Meeting	Virtual Meetings	Project Team will host separate meetings with state and federally recognized Tribes/Tribal Nations to discuss the development of a Project decommissioning plan and solicit feedback from Tribes/Tribal Nations on their concerns and recommendations	Beginning of decommissioning plan development
Decommissioning Plan Review	Virtual Meetings	Project Team will host separate meetings with state and federally recognized Tribes/Tribal Nations to discuss the draft decommissioning plan with Tribes/Tribal Nations and get their feedback on the proposed plan	During decommissioning plan development
Regular Project Update Meeting	Virtual Meetings	Project Team will host separate meetings with state and federally recognized Tribes/Tribal Nations to share Project decommissioning updates	Biannually
Project Update	Email/ Newsletter/ Website Update	Project Team will provide TRs with regular Project updates	Quarterly

8. KEY PERFORMANCE INDICATORS/METRICS AND REPORTING

Key performance indicators (KPIs) are a set of quantifiable measurements or metrics used to gauge a company's or organization's overall, long-term performance in implementing a plan or program. In the context of this NATCP, KPIs will be used to track the Project Team's performance in conducting/completing the engagement activities outlined in Section 6.0. For each phase of the Project, the Project Team will track the number of engagement activities/actions completed compared to the number described in the NATCP, as well as significant outcomes from each engagement using Table 14 below. In addition, the Project Team will draft meeting summaries after each Project meeting, which will include the following information:

- A list of invited attendees;
- A list of attendees, including names, titles, and affiliation (Tribe/Tribal Nation or Project Team);
- A summary of the key topics discussed during the meeting as well as key findings, recommendations, and outcomes; and
- A summary of follow-up and/or action items developed during the meeting.

The Project Team will share a draft of the meeting summary with each participant for review and comment before finalizing. The meeting summaries, along with copies of all electronic and hard copy correspondence, will be retained in an internal administrative record documenting implementation of this NATCP, as well as to support BOEM-required progress reporting.⁹

The Project Team will share a copy of Table 14 with the participating Tribes/Tribal Nations every six (6) months to allow the Project Team and the Tribes/Tribal Nations to evaluate implementation of the NATCP. Along with submission of Table 14, the Project Team will solicit feedback and recommendations from the participating Tribes/Tribal Nations on how to improve the NATCP and its implementation. The information collected in Table 14 will be incorporated into the Progress Reports filed every 6 months with BOEM pursuant to the requirements of lease stipulation 3.1 in Addendum C.

⁹ BOEM reporting requirements can be found in Addendum C, Section 3.0 of the Commercial Leases for Duke Energy and TotalEnergies.

Table 14. NATCP KPIs

Engagement Activities	Planned	Completed	Description / Topics Discussed / Outcomes	Significant Outcomes/ Changes to Project Plans as a Result of Engagement Activities
Pre-Survey Meeting and NATCP Development Phase				
NATCP Invitation	1	1	The CLB Lessees sent invitations to federal, and state recognized Tribes/Tribal Nations with historic and cultural ties to the Carolina Long Bay Region on November 23, 2022. Hardcopies of the invitation letter were sent via certified mail and electronic copies were sent via email. After the initial mailing/email, BOEM informed the CLB Lessees that the Shawnee Tribe had expressed interest in participating in the NATCP. Hardcopy invitation letters were sent via certified mail and electronic copies were emailed to the Shawnee Tribe on December 15, 2022. The CLB Lessees followed up with state and federally recognized Tribes/Tribal Nations that had received NATCP invitation letters and emails with phone calls in mid-January 2023.	Via the hardcopy mailing, email, and phone calls, the CLB Lessees reached out to 16 federal and 19 state recognized Tribes/Tribal Nations to introduce the lessees, their projects, and invite the Tribes/Tribal Nations to participate in the NATCP.
Tribal Engagement Survey (TES)	1	1	The NATCP Invitation letters and emails sent to state and federally recognized Tribes/Tribal Nations on November 23, 2022, and December 15, 2022, included hardcopies and electronic copies of the TES. The TES was sent to 16 federally recognized Tribes/Tribal Nations and 19 state recognized Tribes/Tribal Nations. The CLB Lessees received completed TES documents from one federally recognized Tribe/Tribal Nation (Catawba Indian Nation) and five state recognized Tribes/Tribal Nations (Eastern Cherokee, Southern Iroquois, and United Tribes of South Carolina; Edisto Natchez-Kusso Tribe of South Carolina; Lower Eastern Cherokee Nation of South Carolina; Pee Dee Indian Tribe; and Waccamaw Indian People).	<p>The TES responses received from the federal and state recognized Tribes/Tribal Nations were used to refine the type, frequency, and content of engagement activities throughout the proposed project lifecycle. Significant outcomes/changes include, but are not limited to, the following:</p> <ul style="list-style-type: none"> – Based on requests made by respondents, the CLB Lessees established separate but equivalent engagement activities for federal and state recognized Tribes/Tribal Nations; – Included a combination of one-on-one, face-to-face meetings between the CLB Lessees and Tribes/Tribal Nations and group meetings attended by Lessees and multiple Tribes/Tribal Nations in the NATCP at national, regional, and/or local conferences/events, such as the National Association of Tribal Historic Preservation Officers Conference or the North Carolina Tribal Unity Conference, and will invite participating Tribes to meet face-to-face; – Refined the list of topics to be covered during engagement activities; – Quarterly virtual meetings with Tribes/Tribal Nations during pre-construction project phases shifting to bi-annual update meetings during project operation.

Engagement Activities	Planned	Completed	Description / Topics Discussed / Outcomes	Significant Outcomes/ Changes to Project Plans as a Result of Engagement Activities
Draft NATCP Submission	1	1	On March 10, 2023, BOEM sent a copy of the draft NATCP and an invitation to attend a meeting to discuss the draft document to the following federally recognized Tribes/Tribal Nations: Seminole Tribe of Florida, Eastern Band of Cherokee Indians, Tuscarora Nation of New York; Shawnee Tribe, United Keetoowah Band of Cherokee Indians in Oklahoma, Delaware Tribe of Indians, Catawba Indian Nation, Chickahominy Indian Tribe, Chickahominy Indian Tribe-Eastern Division, Monacan Indian Nation, Nansemond Indian Nation, Pamunkey Indian Tribe, Rappahannock Tribe, and the Upper Mattaponi Indian Tribe. On April 28, 2023, the CLB Lessees sent a draft copy of the NATCP and an invitation to attend a meeting to discuss the draft document to the following state recognized Tribes/Tribal Nations in North Carolina and South Carolina: Coharie Indian Tribe; Lower Eastern Cherokee Nation of South Carolina; Haliwa-Saponi; The Santee Indian Organization; Meherrin Indian Tribe; Sumter Tribe of Cheraw Indians; Occaneechi Band of Saponi Nation; Waccamaw Indian People; Sappony; Wassamasaw Tribe of Varnertown Indians; Waccamaw Siouan Tribe; Chaloklowa Chickasaw Indian People; Beaver Creek Indians; Eastern Cherokee, Southern Iroquois, and United Tribes of South Carolina; Edisto Natchez-Kusso Tribe of South Carolina; Natchez Tribe of South Carolina; Pee Dee Indian Nation of Upper South Carolina; Pee Dee Indian Nation of Beaver Creek; Pee Dee Indian Tribe; Lumbee Tribe of North Carolina.	No significant outcomes/changes. The Tribes/Tribal Nations did not provide written comments on the draft NATCP document.
NATCP Meeting	2	2	The CLB Lessees held two meetings to discuss the draft NATCP, one meeting with federally recognized Tribes/Tribal Nations with historic and cultural ties to the CLB project area and one meeting with state recognized Tribes/Tribal Nations in North Carolina and South Carolina. The meeting with federally recognized Tribes/Tribal Nations was convened by BOEM on April 5, 2023, and attended by BOEM, the CLB Lessees, and representatives from the federally recognized Seminole Tribe of Florida, Upper Mattaponi Indian Tribe, and Monacan Indian Nation. The meeting for state recognized Tribes/Tribal Nations was held by the CLB Lessees on May 24, 2023, and attended by representatives from the state recognized Coharie Intra-Tribal Council, Haliwa-Saponi Indian Tribe, and Lumbee Tribe of North Carolina.	The CLB Lessees made the following changes/edits to the NATCP based on feedback/recommendations made by federal and state recognized Tribes/Tribal Nations during the two draft NATCP meetings: <ul style="list-style-type: none"> – Added a commitment in the draft NATCP to meet face-to-face with Tribes/Tribal Nations in or near Tribal communities, either individually or in groups, and a commitment to hold one-on-one, face-to-face meetings with Tribes/Tribal Nations in their communities upon request. – A commitment to record future meetings held as part of the NATCP and to make the recordings available to Tribal Representatives that were not able to attend the meeting.
Revised NATCP Submission	1	1		
Geophysical and Geotechnical Pre-Survey Meetings	2	2	To reduce the engagement/consultation burden on Tribes/Tribal Nations, the CLB Lessees added a discussion of the proposed Carolina Long Bay 2023 Buoy Location Geophysical Campaign to the end of the draft NATCP meetings with federal and state recognized Tribes/Tribal Nations. The Carolina Long Bay 2023 Buoy Location Geophysical Campaign meeting held with federally recognized Tribes/Tribal Nations on April 5, 2023, was designed to satisfy the Tribal Pre-Survey Meeting requirement in Lease Stipulation 5.3.4 in Addendum C of both CLB leases. The Buoy Location Geophysical Campaign meeting with state recognized Tribes/Tribal Nations was held on May 24, 2023, after the draft NATCP discussion.	Commitments made during these meetings include: <ul style="list-style-type: none"> – Committed to developing a Native American Graves Protection and Repatriation Act (NAGPRA) Action Plan outlining Lessee and BOEM responsibilities if human remains were recovered on the Outer Continental Shelf and adding the NAGPRA Action Plan to the CLB PRDP for activities in federal waters. The updated PRDP with the NAGPRA Action Plan would also be added to the NATCP as an appendix. – Sharing the results of the buoy location geophysical surveys with federal and state recognized Tribes/Tribal Nations by sharing the Site Assessment Plan (SAP) which will include a marine archaeological assessment.
Project Updates				



Engagement Activities	Planned	Completed	Description / Topics Discussed / Outcomes	Significant Outcomes/ Changes to Project Plans as a Result of Engagement Activities
Site Assessment/Characterization Engagement Activities				
Geophysical and Geotechnical Pre-Survey Meetings				
Regular Project Update Meeting				
Project Update (Email/Newsletter/Website Update)				
Meetings with Tribal/Tribal Nation Governments				
COP Development Phase				
Regular Project Update Meeting				
Project Update				
Meetings with Tribal/Tribal Nation Governments				
BOEM Environmental and Technical Review Phase				
Regular Project Update Meeting				
Project Update				
NEPA Public Meetings				
NHPA Section 106 Consultation Meetings				
Meetings with Tribal/Tribal Nation Governments				
Construction				
Regular Project Update Meeting				
Project Update				
Meetings with Tribal/Tribal Nation Governments				



Engagement Activities	Planned	Completed	Description / Topics Discussed / Outcomes	Significant Outcomes/ Changes to Project Plans as a Result of Engagement Activities
Operations Phase				
Regular Project Update Meeting				
Project Update				
Meetings with Tribal/Tribal Nation Governments				
Decommissioning Phase				
Decommissioning Plan Development Meeting				
Decommissioning Plan Review				
Regular Project Update Meeting				
Project Updates				

9. CONFLICT RESOLUTION

One of the principal objectives of this NATCP is to build a strong relationship with Tribes/Tribal Nations built on transparency, trust, and mutual respect. The Project Team does, however, recognize that Tribes/Tribal Nations may have Complaints associated with the development of lease areas OCS-A 0545 and OCS-A 0546. As a result, the NATCP includes a Tribes/Tribal Nations Grievance Procedure (Grievance Procedure) to allow Tribal governments and members to raise questions or concerns with the Project Team and have them addressed promptly and respectfully¹⁰.

The goal of this Grievance Procedure is to address all Complaints received, regardless of whether they stem from real or perceived issues and whether the Complainant is named or anonymous. Any Tribe/Tribal Nation member considering itself to be affected by Project activities will have access to this Grievance Procedure at no cost. Complainant's participation in this process will not diminish the rights or remedies of the Complainant under any applicable law or regulation.

9.1. Purpose and Objectives

This Grievance Procedure establishes the process for addressing Complaints raised in connection with Duke Energy or TERUSA. It describes the scope and procedural steps for the Complaint-handling process and specifies roles and responsibilities of the parties involved. It will be revised and updated periodically based on experience and feedback from Tribes/Tribal Nations.

This Grievance Procedure has the following objectives:

- Establish a prompt, consistent, and respectful mechanism for receiving, investigating, and responding to Complaints from Tribes/Tribal Nations;
- Ensure proper documentation of Complaints and any corrective actions taken; and
- Contribute to continuous improvement in performance through the analysis of trends and lessons learned.

9.2. Scope

This Grievance Procedure is open to all members of Tribes/Tribal Nations who consider themselves affected by Duke Energy's or TERUSA's project activities. Complaints may be

¹⁰ The Grievance Procedure is based on guidance published by the Ipieca, the global oil and gas association dedicated to advancing environmental and social performance across the energy transition. The guidance documents used to develop this Grievance Procedure can be reviewed at <https://www.ipieca.org/resources/good-practice/community-grievance-mechanisms-in-the-oil-and-gas-industry/>.

submitted on a named or anonymous basis. There are no restrictions on the type of issue a Tribe/Tribal Nation member can raise under this Procedure. All Complaints received under this Grievance Procedure shall be tracked until close out regardless of the process under which they are handled.¹¹

9.3. Terminology and Roles & Responsibilities

Table 15 defines terms used throughout the Grievance Procedure.

Table 15. Grievance Procedure Terms

Term	Definition
Complainant	An individual, group, or organization who submits a Complaint to the Project owner.
Complaint	An expression of dissatisfaction with the Project owner, typically referring to a specific source of concern or grievance and/or seeking a specific solution. For the purposes of this Grievance Procedure, a question or request may also be treated as a Complaint.
Complaint Log	A database for maintaining information about Complaints received.
Contractor	An individual or firm that has entered into a contract to provide goods or services to the Project owner. The term covers parties directly contracted by the Project owner and those contracted by a contractor company, also referred to as subcontractors.

Table 16 defines key participants in the Grievance Procedure and their respective roles and responsibilities.

Table 16. Grievance Procedure Roles and Responsibilities

Role	Responsibility
Managing Director Duke Energy/ Permitting and Development Director- Carolina Long Bay, TERUSA	Accountable for the implementation of this Grievance Procedure.
Tribal Liaisons	Responsible for the overall implementation of this Grievance Procedure. This includes serving as custodian of the Complaints process, monitoring the handling of Complaints, and suggesting changes to policies or practices based on lessons learned.

¹¹ Duke Energy and TERUSA reserve the right not to address a Complaint, which it reasonably considers amounts to no more than general, unspecified, and therefore un-actionable dissatisfaction with Duke Energy and TERUSA; is otherwise malicious or vexatious in nature; or concerns a matter for which the company has no formal responsibility (for example, a matter that the government controls).

Role	Responsibility
Complaint Owner	Responsible for co-coordinating the response to a Complaint and serving as the main point of contact with the Complainant. This includes receiving and reporting Complaints, maintaining the Complaints Log, supporting the resolution of Complaints, and liaison with the Complainant.

9.4. Grievance Procedure

The following procedure will be followed for receiving, investigating, and resolving Complaints submitted by Tribe/Tribal Nation members or government representatives.

1. **Receive:** The Grievance Procedure is initiated when a complaint is received by a staff member or contractor and referred to the TL or is received by the TL. If the Complaint is readily resolvable and can be dealt with immediately, the TL takes action to address the issue directly and records the details in the Complaints Register. If the Complaint is not readily resolvable, the TL will create a record of the Complaint in the Complaint Register.
2. **Assess and Assign:** The TL makes an initial assessment of severity and assigns the Complaint to a Complaint Owner. The TL and the Complaint Owner agree the timelines for an investigation and any follow-up actions. The TL provides access to all relevant documentation to the Complaint Owner.
3. **Acknowledge:** Once a Complaint has been assessed and a Complaint Owner assigned, the TL sends an email acknowledgement to the Complainant. The email should normally be sent within 10 days of receiving the Complaint. The CLO documents the acknowledgement in the Complaints Register.
4. **Investigate:** The Complaint Owner investigates the factual basis for the complaint and proposes options to resolve the issue. The Complaint Owner may involve third parties in the fact-finding process, as required. The identity of the Complainant should only be disclosed to the extent necessary to resolve the issue or as required by law. If the Complainant has specifically requested that his or her identity not be disclosed, their personal information may not be shared with third parties unless required by law. Duke Energy/TERUSA will generally seek to resolve complaints within 30 days. The maximum resolution period should not normally exceed 60 days. The TL is responsible for providing regular progress reports to the Complainant, including an email update after 15 days. If additional time is needed to complete an investigation, the Complaint Owner will notify the TL, who will inform the Complainant of the reason for the delay.
5. **Response:** The Complaint Owner and TL agree on a response to the Complainant. The response should communicate the findings of the investigation, set out the proposed solution and timelines, and seek feedback from the Complainant. The Complaint Owner and CLO determine next steps based on feedback from the Complainant. If the Complainant accepts the resolution, the Company will proceed to implement it. If the Complainant does

not accept the resolution, the Complaint will be escalated to the Managing Director, Duke Energy or Permitting and Development Director-NC TERUSA, as appropriate, for further review and internal discussion, and a revised proposed solution will be submitted to the Complainant. The Complainant's response will be documented in the Complaint Log.

6. **Resolution:** Duke Energy/TERUSA will seek to reach a resolution with the Complainant that is satisfactory to both sides. If Duke Energy/TERUSA and the Complainant are unable to agree on a solution, the Complaint may be escalated for review by the Managing Director, Duke Energy/Permitting Development Director-NC TERUSA, and representatives from the Complainant's Tribal government for review and final decision.
7. **Close Out:** A Complaint is closed out when no further action can be taken or needs to be taken. Closure status will be classified in the Complaints Register as follows:
 - a. Resolved. Complaints where a resolution has been agreed upon and implemented.
 - b. Unresolved. Complaints where it has not been possible to reach an agreed upon resolution.
 - c. Abandoned. Complaints where the Complainant is not contactable after one month following receipt of a Complaint and efforts to trace his or her whereabouts have been unsuccessful.

9.5. Performance Monitoring and Reporting

The TL is responsible for gathering and reporting performance monitoring data under this Grievance Procedure. KPIs will be collected to enable Duke Energy/TERUSA to analyze trends in Complaints received and identify underlying systemic issues. The TL is responsible for making recommendations for changes to policies or practices based upon on-going learning from Complaints.

10. PROCESSES FOR REVISING NATCP

The Project Team views the NATCP as a “living document” that will need to be modified and adapted throughout plan implementation to achieve the goal of effective communication, collaboration, and coordination between the Project Team and participating Tribes/Tribal Nations. Examples of possible changes to the NATCP could include increasing or decreasing the number/frequency of engagement activities during each Project phase, revisions to the roles and responsibilities of TRs or the Project Team TL based on lessons learned during plan implementation, and/or adding additional KPI/performance metrics to the plan. The process for modifying the NATCP will embody the core principles of communication, coordination, and collaboration between participants.

The following process will be used to modify the NATCP.

1. Any participating Tribe, Tribal Nation, or the Project Team may, at any time, propose a modification or amendment to the NATCP;
2. Proposed modifications/amendments will be submitted to the Project Team, and the Project Team will be responsible for sharing them with all participating parties;
3. The proposed modification/amendment will be submitted to all participating parties for review and comment;
4. Participating parties will have 30 days to review and comment on the proposed modification/amendment;
5. At the close of the 30-day review-and-comment period, the Project Team will share all comments received on the proposed modification/amendment to the participating parties for review;
6. No more than one (1) week after all comments have been shared, participating parties will be offered an opportunity to vote on the proposed NATCP modification/amendment;
7. For a modification/amendment to be accepted, it must receive a majority of votes from participating parties;
8. If the proposed modification/amendment receives the necessary votes, the Project Team will modify the NATCP document and send the revised version to participating parties; and
9. Once participating parties have received the revised NATCP document, the Project Team and participating parties will be responsible for implementing the revised NATCP. An updated copy of the NATCP will then be made public on the Project Team website.

If any participating party decides to object to a modification/amendment accepted under the process outlined above, the Project Team will meet with the objecting party in hopes of developing a mutually agreeable solution to the objection.



If Tribes/Tribal Nations that previously declined the Project Team’s invitation to participate in the NATCP decide to participate in the plan, adding said Tribe/Tribal Nation to the NATCP will not be subject to the process outlined above. The Tribe/Tribal Nation requesting to participate will be added to the plan and an updated version will be disseminated to the participating Tribes/Tribal Nations. Similarly, administrative updates to the NATCP, such as updating TL/TR names and contact information or editorial revisions to fix typos, will not be subject to the process outlined above. When administrative revisions are made by the Project Team, the TL will revise the document and send an updated version of the plan along with a description of the changes to the participating Tribes/Tribal Nations.



11. 508 COMPLIANCE STATEMENT

Section 508 of the Rehabilitation Act of 1973 requires federal agencies to make their electronic and information technology accessible to people with disabilities. BOEM has requested that lessees prepare documents compliant with Section 508 so BOEM can readily post the report on its website. Information on how to create accessible digital products can be found at www.section508.gov/create. All publicly available documents generated through implementation of this NATCP will be compliant with Section 508 of the Rehabilitation Act of 1973.

12. CONCLUSION

As the world's energy future is being shaped by the dual challenge of climate change and rising demand for energy, we believe abundant and clean offshore wind energy will play a pivotal role in meeting the world's growing demand for electricity and limit global warming. The Project Team firmly believes that investing in wind energy is one way we can conserve our natural resources providing affordable, sustainable, and increasingly clean energy.

Tribes/Tribal Nations can and should play an important role in the development of the offshore wind industry in the United States. Only through a respectful, collaborative, and equitable relationship between Duke Energy, TERUSA, and Native American Tribes/Tribal Nations can we work together to develop environmentally, socially, and culturally sustainable offshore renewable energy projects. The Project Team believes that developing this NATCP around the core values of communication, coordination, and collaboration, is the first step in building that meaningful, productive, and mutually beneficial relationship with Tribes/Tribal Nations.



APPENDIX A. POST-REVIEW DISCOVERIES PLAN



APPENDIX A. POST-REVIEW DISCOVERIES PLAN

Post Review Discovery Clause 5.3.7

The Post-Review Discovery Clauses within Section 5.3.7 through 5.3.7.5 of Addendum “C” of the Carolina Long Bay (CLB) commercial leases require lessees to comply with a series of requirements to protect archaeological resources and human remains. Under Section 5.35 of the CLB leases, the lessees may only conduct geotechnical exploration activities performed in support of plan (i.e., Site Assessment Plan [SAP] and/or Construction and Operations Plan [COP]) submittal in locations where an analysis of the results of geophysical surveys has been completed. This analysis must include a determination by a Qualified Marine Archaeologist (QMA) as to whether any potential archaeological resources are present in the area. The QMA must certify, in the Lessee's archaeological reports, that geotechnical exploration activities will not impact potential historic properties identified as a result of the HRG surveys performed in support of plan submittal.

If a CLB Lessee, while conducting geotechnical exploration or any other bottom-disturbing site characterization activities in support of plan (i.e., SAP and COP) submittal and after review of the location by a QMA under Section 5.3.5, discovers an unanticipated potential archaeological resource, such as the presence of a shipwreck (e.g., a sonar image or visual confirmation of an iron, steel, or wooden hull; wooden timbers; anchors; concentrations of historic objects; piles of ballast rock) or evidence of a pre-contact archaeological site (e.g., stone tools, pottery or other pre-contact artifacts) within the project area, the CLB Lessee must:

1. Immediately halt seafloor /bottom-disturbing activities within the area of discovery;
2. Notify the Lessor within 24 hours of discovery;
3. Notify the Lessor in writing via report to the Lessor within 72 hours of its discovery;
4. Keep the location of the discovery confidential and take no action that may adversely impact the archaeological resource until the Lessor has made an evaluation and instructs the applicant on how to proceed;
5. If (1) the site has been impacted by the Lessee's project activities; or (2) impacts to the site or to the area of potential effect cannot be avoided, lessee to conduct additional investigations, as directed by the Lessor, to determine if the resource is eligible for listing in the National Register of Historic Places (30 CFR 585.802(b)); and
6. If investigations indicate that the resource is potentially eligible for listing in the National Register of Historic Places, the Lessor will inform the Lessee how to protect the resource or how to mitigate adverse effects to the site.

If the Lessor incurs costs in protecting the resource, then, under Section 110(g) of the National Historic Preservation Act, the Lessor may charge the Lessee reasonable costs for carrying out preservation responsibilities under the OCS Lands Act (30 CFR 585.802(c-d)). Figure A.1 below contains a flowchart of the post review discovery clause process.

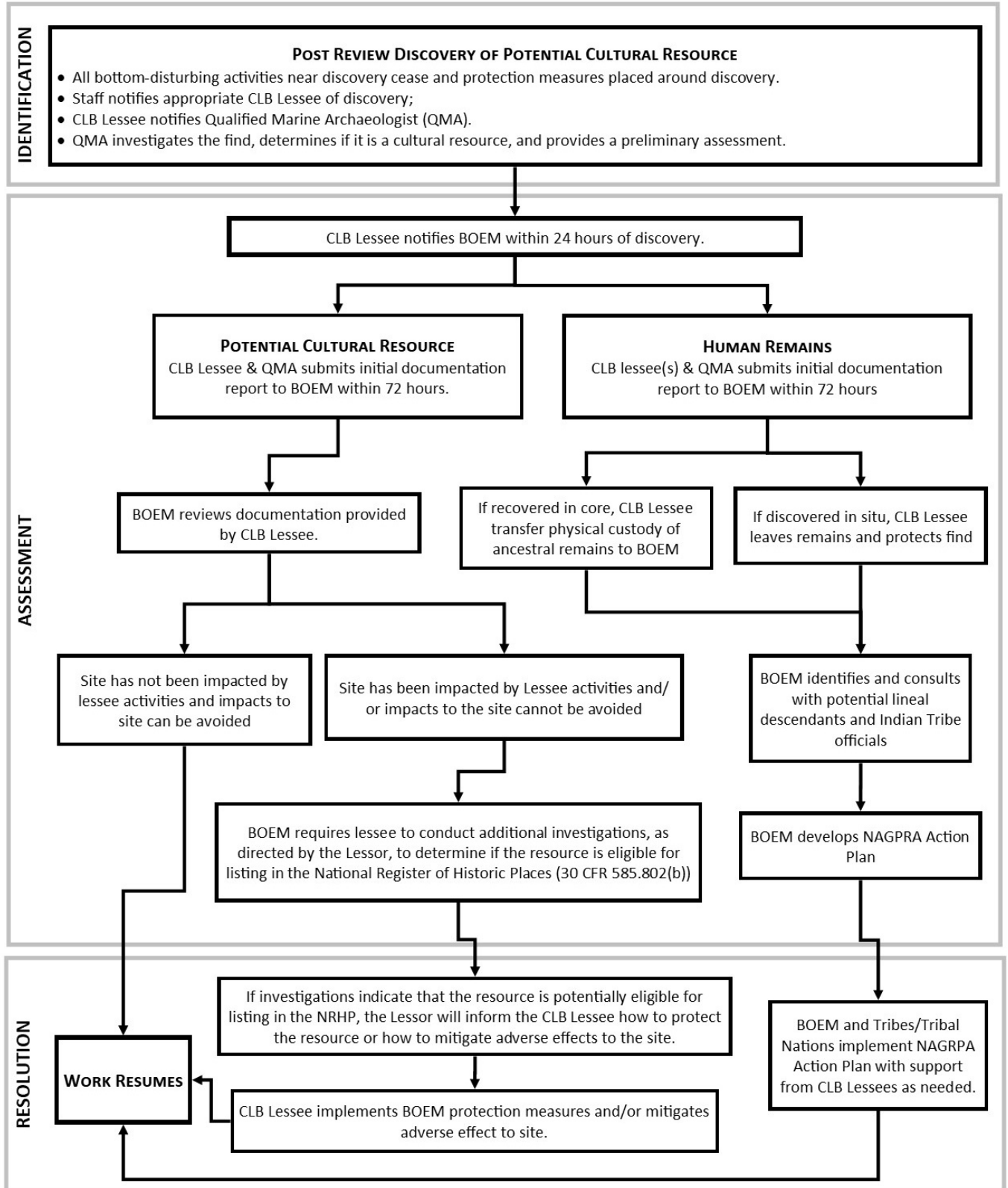


Figure A.1. Post-Review Discovery Clause 5.3.7 Flowchart



BOEM Native American Graves Protection and Repatriation Act (NAGPRA) Statement

BOEM is the federal agency with jurisdiction and regulatory responsibility for renewable energy projects on the Outer Continental Shelf (OCS) and is thus the relevant Federal authority for compliance with the Native American Graves Protection and Repatriation Act (NAGPRA) of 1990 (25 U.S.C. 3001-3013). If renewable energy project activities on the OCS identify suspected or known human remains, funerary objects or sacred objects of cultural patrimony as defined at 43 CFR 10.2(d), which could be associated with Native American peoples then specific steps are required. The CLB lessees are responsible for stopping work in the vicinity of the find, making reasonable efforts to protect the find, and informing BOEM of the discovery as required by 43 CFR 10.4(b). CLB lessees will leave finds in situ until BOEM can develop a plan of action. If NAGPRA covered remains or objects are identified because of lessee activities, BOEM will take immediate steps to consult with Tribal Nations and implement the provisions at 43 CFR Part 10.4 (see **Table A.1**).



Table A.1. Post-Review Discovery Clause Contact List

Organization/Tribe/ Tribal Nation	Contact	Address	Email	Phone
Carolina Long Bay Lessees				
Duke Energy	Spencer Hanes Managing Director Business Development, Duke Energy	525 South Tryon Street Charlotte, NC 28202	Spencer.Hanes@duke-energy.com	704-654- 2606
TotalEnergies USA	Jen Banks Permitting & Development Director – Carolina Long Bay	1201 Louisiana Street, #1800, Houston, TX 77002	jen.banks@totalenergies.com	919-714- 9258
SEARCH	Ben Wells Carolina Long Bay Qualified Marine Archaeologist	3117 Edgewater Drive, Orlando, FL 32804	ben.wells@searchinc.com	570-423- 2758
Federal Agencies				
BOEM	Sarah Stokely Lead Historian and Section 106 Team Lead	45600 Woodland Road, VAM-OREP, Sterling, Virginia 20166	Sarah.Stokely@boem.gov	202-208- 6474
Bureau of Safety and Environmental Enforcement (BSEE)	Shawn Arnold, FPO, Senior Marine Archaeologist	Office of Environmental Compliance 1201 Elmwood Park Blvd. New Orleans, LA 70123	William.arnold@bsee.gov	504-736- 2416



Organization/Tribe/ Tribal Nation	Contact	Address	Email	Phone
State Agencies				
North Carolina Department of Natural and Cultural Resources (NC SHPO)	Renee Gledhill-Earley Environmental Review Coordinator	109 E. Jones Street Raleigh, NC 27601	renee.gledhill-earley@ncdcr.gov	919-814-6579
North Carolina SHPO, Underwater Branch	Chris Southerly Deputy State Archaeologist - Underwater	109 E. Jones Street, Raleigh, NC 27601	chris.southerly@ncdcr.gov ; uab@ncdcr.gov	910-251-7323
South Carolina SHPO	Elizabeth Johnson Director Historical Services, D-SHPO	8301 Parklane Road, Columbia, SC 29223	ejohnson@scdah.sc.gov	803-896-6168
Federally Recognized Tribes/Tribal Nations				
Catawba Indian Nation	Wenonah Haire Tribal Historic Preservation Officer	996 Avenue of the Nations, Rock Hill, SC 29730	wenonah.haire@catawba.com	803-328-2427 ext. 423
Chickahominy Indian Tribe	Dana Adkins, Tribal Environmental Director	8200 Lott Cary Road, Providence Forge, VA 23140	dana.adkins@chickahominytribe.org	804-829-2027
Eastern Band of Cherokee Indians	Russel Townsend Tribal Historic Preservation Officer	P.O. Box 1927, Cherokee, NC 28719	russtown@nc-chokeee.com	828-497-7000
Monacan Indian Nation	Kaleigh Pollak Tribal Historic Preservation Officer	111 Highview Drive, Madison Heights, VA 24521	tribaloffice@monacannation.com	434-363-4864



Organization/Tribe/ Tribal Nation	Contact	Address	Email	Phone
Nansemond Indian Nation	Ellen Chapman Legal Counsel/THPO Support Services	1811 East Grace Street, Richmond, VA 23223	ellen@culturalheritagepartners.com	757-255- 9317
Pamunkey Indian Tribe	Kendall Stevens Tribal Historic Preservation Officer	1054 Pocahontas Trail, King William, VA 23086	pamunkeytribe@pamunkey.org	804-843- 2353
Rappahannock Tribe	Jack Ryan Director Department of Environmental Services	5036 Indian Neck Road, Indian Neck, VA 23148	jryan@rappahannocktribe.org	804-769- 0260 x. 107
Seminole Tribe of Florida	Paul Backhouse Tribal Historic Preservation Officer	30290 Josie Billie Hwy, PMB 1004, Clewiston, FL 33440	PaulBackhouse@semtribe.com	863-983- 6549 x12244
Shawnee Tribe	Tonya Tipton Tribal Historic Preservation Officer	19 N. Eight Tribes Trail, Miami, OK 74354	tonya@shawnee-tribe.com	918-542- 2441 Ext. 103
Tuscarora Nation of New York	Brian Printup Director, Tuscarora Environmental Office	5226 Walmore Road, Lewistown, NY 14092	bprintup@hetf.org ; tuscnationhouse@gmail.com	716-264- 6007
United Keetoowah Band of Cherokee Indians in Oklahoma	Acee Watt Tribal Historic Preservation Officer	P.O. Box 746, Tahlequah, OK 74465	awatt@ukb-nsn.gov ; ukbthpo@ukb-nsn.gov	918-871- 2800
Upper Mattaponi Indian Tribe	Leigh Mitchell Natural Resources and Environmental Protection Coordinator	13476 King William Road, King William, VA 23086	environment@umitribe.org	804-769- 0041



Organization/Tribe/ Tribal Nation	Contact	Address	Email	Phone
State-Recognized Tribes/Tribal Nations				
Coharie Intra-Tribal Council	Greg Jacobs Tribal Administrator	7531 N. U. S. Hwy 421, Clinton, NC 28328	greg_jacobs53@yahoo.com	
Haliwa-Saponi Tribe	Chief Brucie Ogletree Green Richardson	P.O. Box 99, Hollister, NC 27844	borichardson@haliwa-saponi.org	
Lumbee Tribe of North Carolina	Kevin Melvin Tribal Historic Preservation Officer	6984 NC Hwy 711 W, Pembroke, NC 28372	kmelvin@lumbeetribe.com	
Meherrin Indian Tribe	Chief John Caudill	P.O. Box 274, Ahoskie, NC 27910	bmeherrin@yahoo.com	
Occaneechi Band of the Saponi Nation	William Anthony Hayes Tribal Chairperson	P.O. Box 356, Mebane, NC 27302	obsntribe@gmail.com	
Sappony	Chairperson Dorothy Stewart Hayes	P. O. Box 3265, Roxboro, NC 24598	sappony@msn.com	
Waccamaw Siouan	Leslie Jones	P. O. Box 69, Bolton, NC 28423	leslie.jones@waccamaw-siouan.com	
Beaver Creek Indians	Chief Louis Chavis	125 May Morning Drive, Lexington, SC 29073	klcrothers@mindspring.com	
Chaloklowa Chickasaw Indian People	Chief Mingo Vernon Tanner	501 Tanner Lane, Hemingway, SC 29554	vmtbear99@yahoo.com	



Organization/Tribe/ Tribal Nation	Contact	Address	Email	Phone
Eastern Cherokee, Southern Iroquois, and United Tribes of South Carolina	Chief Lamar Nelson	649 Berry Shoals Road, Duncan, SC 29334	lnelson952@yahoo.com	
Edisto Natchez-Kusso Tribe of South Carolina	Chief John Creel	1125 Ridge Road, Ridgeville, SC 29472	edistonatachezkussotribe@gmail.com	
Natchez Tribe of South Carolina	Chief Steve Davis	79 Bluff Road, Columbia, SC 29201	natcheztribeofsc@hotmail.com ; Tiffravenfire@yahoo.com	
Pee Dee Indian Nation of Beaver Creek	Chief Elizabeth Skye Vereen	P. O. Box 396, Neeses, SC 29107	skyyevereen@yahoo.com ; peedeeindiannation@yahoo.com	
Pee Dee Indian Nation of Upper South Carolina	Chief Carolyn Chavis Bolton	3814 Highway 57 North, Little Rock, SC 29567	cbchieb@gmail.com	
Pee Dee Indian Tribe	Chief Pete Parr	P.O. Box 568, Latta, SC 29565	peterbluehawk@yahoo.com	
Piedmont American Indian Association	Chief Mary Louise Worthy	3688 Warrior Creek Church Road, Gray Court, SC 29465	cherokeesister@msn.com	
Sumter Tribe of Cheraw Indians	Chief Ralph Oxendine	5700 Oak Hill Road, Sumter, SC 29154	oxendineralph@yahoo.com	
The Santee Indian Organization	Chief Eric Pratt	432 Bayview Street, Holly Hill, SC 29059	santeetribesc@yahoo.com	
Waccamaw Indian People	Chief Harold Hatcher	P.O. Box 628, Conway, SC 29528	waccamawchief@gmail.com	
Wassamasaw Tribe of Varnertown Indians	Tammy Leach Cultural Preservationist	P. O. Box 428, Summerville, SC 29484	Tammy@wassamasawtribe.com ; wassamasaw@hotmail.com	



Joint Native American Tribes
Communication Plan
Carolina Long Bay Lease Areas
OCS-A-0545 and OCS-A-0546

APPENDIX B. PREVIOUSLY PROVIDED TRIBAL ENGAGEMENT SURVEY



**Native American Tribal Communication Plan (NATCP)
NATCP Questionnaire**

Participation

1. Does/would your Tribal government like to have an introductory meeting with Duke Energy and TotalEnergies to answer any questions you have and discuss your perspectives, concerns, and expectations for the development of offshore wind in the Carolina Long Bay lease area?

Yes No

2. Does/would your Tribal government like to participate in regular engagement meetings with Duke Energy and TotalEnergies about their offshore wind project development activities?

Yes No

If you respond yes, please continue with the rest of the survey. If you respond no, feel free to go to the end of the survey. Regardless, we appreciate your time, and please feel free to contact us at any time if your government determines later that it would like to participate in the NATCPs.

Respondent Information¹²

Name: _____

Title: _____

Tribe/Tribal Nation: _____

Alternative Recipient Information:

Name: _____

Title: _____

Contact Information: _____

¹² Please note that the following respondent information is for internal tracking purposes only. All responses to this survey will be kept confidential. The purpose of this document is to get general feedback to help the development of NATCPs that incorporate recommendations from its participants. Although summary information about how many respondents selected each option may be shared with the group, individual responses to questions will be kept confidential.



Introduction

Thank you for your willingness to participate in Duke Energy’s and TotalEnergies’ Tribal Engagement Survey to inform the development of our Native American Tribal Communication Plan (NATCP). The principal objective of the NATCP is to promote meaningful and informative dialogue between lessees and Native American Tribes/Tribal Nations to build trust, reduce potential conflicts, and incorporate the opinions, perspectives, and recommendations of Tribes/Tribal Nations into the development of the offshore wind industry. Duke Energy and TotalEnergies believe that development of the NATCP should embody the core principles of communication, coordination, and collaboration from the very beginning and, as a result, we would like to solicit your feedback and recommendations on the content and structure of our NATCP.

We anticipate it will take approximately 15 minutes to complete the survey. Please feel free to add comments and/or recommendations at the end of the survey. If you believe we should have submitted this questionnaire to another member of your government, please feel free to share with them or use the space below to provide us with their contact information and we will ensure they receive a copy of the questionnaire. Thank you again for your participation.

General Engagement Protocol Questions

The following 10 questions are intended to solicit your feedback and recommendations on the general content of the NATCPs.

1. Lease stipulation 3.1.2.1 requires Duke Energy and TotalEnergies to develop a NATCP that outlines the strategies Duke Energy and TotalEnergies will use for communicating with federally recognized Tribes. Although this requirement is limited to federally recognized Tribes/Tribal Nations, Duke Energy and TotalEnergies intend to engage with both federally recognized and state-recognized Tribes/Tribal Nations to incorporate as many Tribal voices into our decision making as possible.

Duke Energy and TotalEnergies also recognize that Tribal governments have different internal policies regarding joint meetings attended by federally and state-recognized Tribes/Tribal Nations. Based on your internal policies/guidance/preferences, we would like to know which of the following meeting formats you would prefer:

- | | |
|--|---|
| <input type="checkbox"/> Joint meetings between federally and state-recognized Tribes/Tribal Nations | <input type="checkbox"/> Separate meetings between federally and state-recognized Tribes/Tribal Nations |
| <input type="checkbox"/> No preference | <input type="checkbox"/> Do not wish to provide a response. |

2. What is your Tribal government’s preferred method(s) of communication? (Select all that apply):

- | | | | |
|----------------------------------|--------------------------------|--|---------------------------------|
| <input type="checkbox"/> Letters | <input type="checkbox"/> Email | <input type="checkbox"/> Telephone calls | <input type="checkbox"/> Other: |
|----------------------------------|--------------------------------|--|---------------------------------|



3. In general, how frequently would you like update meetings to be held?
- Monthly Quarterly Bi-annually Annually
4. What is your Tribal government’s preferred meeting format? (Select all that apply)
- Video conference calls Telephone calls Face-to-face meetings
- Pre-recorded webinars Other:
5. Would your Tribal government prefer one-on-one meetings with Duke Energy and TotalEnergies or group meetings with other Tribes/Tribal Nations with an interest in the project?
- One-on-one meetings Group meetings
- A combination of one-on-one and group meetings
6. Which members of your Tribal government should be included in communications and updates from Duke Energy and TotalEnergies, and who should be invited to attend update/information sharing meetings?
- Tribal Government Executive Tribal Council/Tribal Council Members
- Tribal Historic Preservation Officer (THPO) Director of Natural Resources/Environment Department
- Tribal Legal Counsel
- Other:
-
-
-
-
-
-
-
7. Although specific meeting agendas will vary, Duke Energy and TotalEnergies would like your feedback on types of standard meeting elements that could be incorporated into general meeting plans. Which of the following meeting elements would you like to see included in standard meeting formats? (Select all that apply)
- Opening prayer/invocation from Tribal representative(s) Prepared opening statements



- Question and answer session
 - Listening sessions
(Lessees listen to Tribal concerns)
 - Closing prayer/benediction from Tribal representative(s)
 - Other:
- Prepared presentations
 - Knowledge/Information sharing by Tribes

8. In addition to meetings, are there other methods your Tribe/Tribal Nation would like or prefer to receive regular offshore wind project updates? (Check all that apply).

- Emails
- Regular newsletters
- Pre-recorded presentations/videos
- Project website posts
- Semi-annual progress reports
- Other:

9. On which of the following topics would your Tribal government like to receive regular updates from lessees? (Check all that apply):

- Employment, Economics, and Demographics
- Physical Oceanographic/ Meteorological Conditions
- Water Quality
- Coastal and Terrestrial Habitats
- Environmental Justice
- Geological Resources
- Air Quality
- Benthic and Shellfish Resources



- Fish and Essential Fish Habitat
- Sea Turtles
- Bat Species
- Marine Archaeological Resources
- Aboveground Historic Properties
- Recreation & Tourism
- Other Marine and Coastal Land Uses
- Land Transportation and Navigation
- Project Siting and Design Development
- Site Characterization & Assessment Studies
- State Government Consultations
- Other:
- Marine Mammals
- Avian Species
- Visual Resources
- Terrestrial Archaeological Resources
- Public Services
- Commercial and Recreational Fishing
- Marine Transportation and Navigation
- Air Transportation and Navigation
- Offshore and Onshore Site Investigations
- Compliance Activities/ Permits
- Federal Government Consultations

Project Phase Engagement

Duke Energy and TotalEnergies recognize that Tribe/Tribal Nations are extremely busy, especially with the introduction of many offshore wind projects to an already full project review schedule. Duke Energy’s and TotalEnergies’ goal is to develop a NATCP that promotes meaningful communication, coordination, and collaboration without being overly burdensome to Tribes/Tribal Nations. With that in mind, we would like to develop a flexible engagement plan that reduces the number of engagement meetings during periods of relatively low activity and increase the number during periods of increased activity and when Duke Energy and TotalEnergies are making important project decisions.

Under the proposed approach, Duke Energy’s and TotalEnergies' NATCP would be divided into the following phases:

1. Development of NATCPs;
2. Site Assessment/Characterization (including Pre-Survey Meetings);



- 3. Construction and Operations Plan (COP) Development;
- 4. BOEM Environmental and Technical Review;
- 5. Construction;
- 6. Operation and Maintenance (O&M); and
- 7. Decommissioning.

The following sections provide an overview of each of these phases, including the likely duration of the phase and discussion topics and engagement activities likely to take place during each phase. Based on the description, duration, and likely engagement topics outlined for each phase, we are interested to know your thoughts, perspectives, and opinions on the types and frequency of engagement activities you would like to see during each phase.

1. NATCP Development Phase

Description: This phase begins with lease execution and ends with the submittal of the final NATCPs. Activities during this phase include all engagements and conversations with Tribes/Tribal Nations to develop the NATCPs.

Duration: Approximately 12 months.

Potential Discussion Topics/Engagement Activities:

- Content and format of the NATCPs.
 1. How frequently would you like regular, online update meetings to be held during this phase?
 - Monthly Every Other Month Quarterly
 - Other: _____
 2. In addition to meetings, are there other methods your Tribe/Tribal Nation would like or prefer to receive regular offshore wind project updates? (Select all that apply).
 - Emails Regular newsletters Pre-recorded presentations/videos
 - Project website posts Semi-annual progress reports
 - Other: _____
 3. How frequently would you like to receive regular, non-meeting updates such as those listed in the previous question during this phase?
 - Monthly Every Other Month Quarterly
 - Other: _____



2. Site Assessment and Characterization Phase

Description: The Site Assessment and Characterization Phase includes 's and TotalEnergies submitting site characterization survey plans to BOEM in support of geophysical (side scan sonar, sub-bottom profiler, etc.) and geotechnical (coring) survey activities (G&G surveys), studies to support project engineering and archaeological investigations, and studies such as marine mammal, benthic habitat, and fisheries. Duke Energy and TotalEnergies may also submit a site assessment plan (SAP) to BOEM to install a Floating Light Detection and Ranging Lidar (FliDAR) buoy within the lease areas to collect meteorological information.

Duration: Up to five (5) years, starting in 2023.

Potential Discussion Topics/Engagement Activities:

- BOEM G&G survey plan review and comment;
- G&G pre-survey meetings;
- Status updates on site assessment/characterization survey progress;
- Preliminary results of site assessment/characterization surveys;
- Review and discuss marine and terrestrial archaeological survey and viewshed studies plans;
- Project design updates;
- Solicit feedback, input, perspectives of Tribes/Tribal Nations on site assessment/characterization investigations; and
- SAP review and comment (if applicable).

1. How frequently would you like regular, online update meetings to be held during this phase?

Monthly Every other month Quarterly Bi-annually Annually

Other: _____

2. In addition to meetings, are there other methods your Tribe/Tribal Nation would like or prefer to receive regular offshore wind project updates? (Select all that apply).

Emails Regular newsletters Pre-recorded presentations/videos

Project website posts Semi-annual progress reports

Other: _____

3. How frequently would you like to receive regular, non-meeting updates such as those listed in the previous question during this phase?

Monthly Quarterly Bi-annually Annually

Other: _____



3. Construction and Operations Plan Development

Description: During this phase, Duke Energy and TotalEnergies will analyze and review the information collected during the Site Assessment and Characterization Phase to develop the project COPs. The COPs will describe how Duke Energy and TotalEnergies propose to construct and operate a commercial wind project on Lease Area OCS-A 0546 (Duke Energy) and Lease Area OCS-A 0545 (TotalEnergies) and includes a description of all planned facilities, as well as a description of proposed construction activities, commercial operations, and conceptual decommissioning plans. The COPs also summarize the results of the biological, geotechnical, socioeconomic, and cultural resources studies completed during the site assessment phase; an assessment of the project’s potential impacts; and proposed measures for avoiding, minimizing, mitigating, and monitoring impacts.

Duration: One to two (1-2) years.

Potential Discussion Topics/Engagement Activities:

- Results of site assessment/characterization surveys;
- Review and discussion of Project Design Envelopes (PDE);
- Review/discuss Marine Archaeological Resource Assessments (MARA), Terrestrial Archaeological Resource Assessments (TARA), and Historic Resources Visual Effects Assessments (HRVEA);
- Review and discuss COP findings and each project’s potential impacts on environmental, socio-economic, and cultural resources; and
- Incorporate the perspectives, opinions, concerns, and recommendations of Tribes/Tribal Nations into proposed measures to avoid, minimize, mitigate, and/or monitor project impacts.

1. How frequently would you like regular, online update meetings to be held during this phase?

- Monthly Every other month Quarterly Bi-annually Annually

Other: _____

2. In addition to meetings, are there other methods your Tribe/Tribal Nation would like or prefer to receive regular offshore wind project updates? (Select all that apply).

- Emails Regular newsletters Pre-recorded presentations/videos
- Project website posts Semi-annual progress reports

Other: _____

3. How frequently would you like to receive regular, non-meeting updates such as those listed in the previous question during this phase?

- Monthly Quarterly Bi-annually Annually

Other: _____

4. BOEM Environmental and Technical Review



Description: BOEM conducts environmental and technical reviews of the COPs, and through its National Environmental Policy Act (NEPA) and National Historic Preservation Act (NHPA) reviews, decides whether to approve, approve with modifications, or disapprove the COPs.

Duration: Up to three (3) years.

Potential Discussion Topics/Engagement Activities:

- Revisions to the COPs;
- Updates/revisions to MARAs, TARAs, HRVEAs and/or Cumulative Historic Resources Visual Effects Assessments (CHRVEA) studies;
- Revisions to proposals to avoid, minimize, and/or mitigate impacts to environmental, socio-economic, and cultural resources;
- Final PDEs; and
- Clarify information shared by BOEM or other agencies.

1. How frequently would you like regular, online update meetings to be held during this phase?

- Monthly Quarterly Every other month Bi-annually Annually

Other: _____

2. In addition to meetings, are there other methods your Tribe/Tribal Nation would like or prefer to receive regular offshore wind project updates? (Select all that apply).

- Emails Regular newsletters Pre-recorded presentations/videos

- Project website posts Semi-annual progress reports

Other: _____

3. How frequently would you like to receive regular, non-meeting updates such as those listed in the previous question during this phase?

- Monthly Quarterly Bi-annually Annually

Other: _____

5. Construction

Description: During this phase, Duke Energy and TotalEnergies will construct the proposed offshore wind farm within Lease Area OCS-A 0546 (Duke Energy) and Lease Area OCS-A 0545 (TotalEnergies).

Duration: Two to three (2-3) years.

Potential Discussion Topics/Engagement Activities:

- Share construction progress updates;
- Coordinate to avoid or minimize ocean user conflicts;



- Coordinate the participation of Tribe/Tribal Nations in environmental, social, and/or cultural resource mitigation or monitoring programs; and
 - Review construction phase monitoring reports.
1. How frequently would you like regular, online update meetings to be held during this phase?
 - Monthly Every other month Quarterly Bi-annually Annually
 - Other: _____
 2. In addition to meetings, are there other methods your Tribe/Tribal Nation would like or prefer to receive regular offshore wind project updates? (Select all that apply).
 - Emails Regular newsletters Pre-recorded presentations/videos
 - Project website posts Semi-annual progress reports
 - Other: _____
 3. How frequently would you like to receive regular, non-meeting updates such as those listed in the previous question during this phase?
 - Monthly Quarterly Bi-annually Annually
 - Other: _____

6. Operations and Maintenance

Description: During the O&M phase, Duke Energy and TotalEnergies would operate and perform routine maintenance on the offshore wind farm within Lease Area OCS-A 0546 (Duke Energy) and Lease Area OCS-A 0545 (TotalEnergies).

Duration: The initial operations term for each of the lease areas is 33 years. Duke Energy and TotalEnergies may request extensions for the operations terms from BOEM.

Potential Discussion Topics/Engagement Activities:

- Providing project O&M updates; and
 - Review O&M phase environmental, socio-economic, and cultural resource monitoring reports/information.
1. How frequently would you like regular, online update meetings to be held during this phase?
 - Monthly Every other month Quarterly Bi-annually Annually
 - Other: _____
 2. In addition to meetings, are there other methods your Tribe/Tribal Nation would like or prefer to receive regular offshore wind project updates? (Check all that apply).



- Emails Regular newsletters Pre-recorded presentations/videos
- Project website posts Semi-annual progress reports
- Other: _____

3. How frequently would you like to receive regular, non-meeting updates such as those listed in the previous question during this phase?

- Monthly Quarterly Bi-annually Annually
- Other: _____

7. Decommissioning

Description: At the end of the project’s life, Duke Energy and TotalEnergies will submit a decommissioning application to BOEM. BOEM will then review and determine whether to approve, disapprove, or approve with modifications the decommissioning application. Once approved, Duke Energy and TotalEnergies will decommission and remove its project components.

Duration: Two to four (2-4) years.

Potential Discussion Topics/Engagement Activities:

- Incorporating perspectives, opinions, and recommendations of Tribes/Tribal Nations into decommissioning plans; and
- Review assessment of potential impacts from decommissioning on environmental, socio-economic, and cultural resources.

1. How frequently would you like regular, online update meetings to be held during this phase?

- Monthly Every other month Quarterly Bi-annually Annually
- Other: _____

2. In addition to meetings, are there other methods your Tribe/Tribal Nation would like or prefer to receive regular offshore wind project updates? (Check all that apply).

- Emails Regular newsletters Pre-recorded presentations/videos
- Project website posts Semi-annual progress reports
- Other: _____

3. How frequently would you like to receive regular, non-meeting updates such as those listed in the previous question during this phase?

- Monthly Quarterly Bi-annually Annually



As the next step in this process, Duke Energy and TotalEnergies will use the feedback received through this survey to develop draft NATCPs. Upon completing the draft NATCPs, Duke Energy and TotalEnergies will submit the draft documents to participating Tribes/Tribal Nations for review and comment. As part of that submission, Duke Energy and TotalEnergies will invite participating Tribes/Tribal Nations to attend a virtual meeting together to discuss the draft NATCPs, solicit additional feedback/comments, and finalize the documents. Pursuant to lease stipulation 4.2.2 and BOEM's granted extension, this meeting will be held within 240 days of lease execution. As the leases for lease areas OCS-A 0546 and OCS-A 0545 were both executed on June 22, 2022, this meeting must occur before February 17, 2023.

We appreciate your participation in this process, and we look forward to continuing to work with you as we develop and implement the NATCPs and move forward in the development activities for our projects.



Joint Native American Tribes
Communication Plan
Carolina Long Bay Lease Areas
OCS-A-0545 and OCS-A-0546

APPENDIX C. REGULAR EVENTS HOSTED/SPONSORED BY TRIBES/TRIBAL NATIONS



Table C.1. Regular Events Hosted/Sponsored by Tribes/Tribal Nations

Event/Conference/Meeting	Frequency	Commitment
North Carolina Commission of Indian Affairs meeting	Quarterly	If invited, the Project Team will send a representative to the quarterly meeting to listen to and/or answer questions. The project team will also be available to provide updates as an agenda item as requested.
North Carolina Indian Unity Conference	Annual	If invited, the Project Team will send a representative to the annual North Carolina Indian Unity Conference.