



# Fisheries Communications Plan: TotalEnergies Carolina Long Bay Offshore Wind Project (OCS-A 0545)

TotalEnergies Carolina Long Bay, LLC

1201 Louisiana Street, Suite 1300  
Houston, TX 77002

Lease Area OCS-A 0545

December 1, 2023

Fisheries Communications Plan: TotalEnergies Carolina Long Bay

<b>Project Document N°:</b>	<b>OWUS-CLB-2022-1</b>
<b>Release Date:</b>	<b>10/20/2022</b>
<b>Revision</b>	<b>12/01/2023</b>
<b>Document Status</b>	
<b>Checked by:</b>	<b>Jen Banks Date: 10/19/2022</b>
<b>Approved By:</b>	<b>Sylvain Riba Date: 10/19/2022</b>

Revision Tracking

<b>Version</b>	<b>Date Edited</b>	<b>Edited By</b>	<b>Checked By</b>
<b>3</b>			
<b>2</b>			
<b>1</b>	<b>12/01/2023</b>	<b>Jen Banks</b>	<b>Sylvain Riba</b>

## TABLE OF CONTENTS

<b>ACRONYMS AND ABBREVIATIONS</b> .....	<b>4</b>
<b>SECTION 1 – INTRODUCTION</b> .....	<b>5</b>
Plan Overview .....	5
Points of Contact .....	5
About TERUSA .....	6
Commitment to Safety .....	6
Project Description .....	6
Fisheries Resources .....	7
Fishing Communities.....	9
<b>SECTION 2 – PLAN DEVELOPMENT</b> .....	<b>10</b>
Goals and Objectives.....	10
Commitment to Fisheries .....	10
Guidelines and Requirements .....	12
Lease Stipulations.....	12
Progress Reports.....	13
Revisions to the Plan .....	14
<b>SECTION 3 - ROLES AND RESPONSIBILITIES</b> .....	<b>14</b>
Fisheries Liaison .....	14
Fisheries Representatives.....	15
Onboard Fisheries Liaisons .....	16
<b>SECTION 4 – ENGAGEMENT APPROACHES</b> .....	<b>16</b>
Approaches for Achieving Engagement Objectives.....	17
Key Performance Indicators.....	17
<b>SECTION 5 – ENGAGEMENT ACTIVITIES</b> .....	<b>19</b>
<b>SECTION 6 – CONCLUSION</b> .....	<b>21</b>

## ACRONYMS AND ABBREVIATIONS

Acronym/abbreviation	Definition
ACP	American Clean Power
BOEM	Bureau of Ocean Energy Management
COD	Commercial operation date
COP	Construction and operations plan
fishing communities	Commercial and recreational fishing industries; tribal subsistence fishers
FL	Fisheries liaison
FR	Fisheries representative
GW	Gigawatt
KPI	Key performance indicator
Lease Area	Lease Area OCS-A 0545
NOAA	National Oceanic and Atmospheric Administration
NOAA Fisheries	National Marine Fisheries Service
OCS	Outer Continental Shelf
OFL	Onboard fisheries liaison
Project	TotalEnergies Carolina Long Bay
Plan	Fisheries Communications Plan
RODA	Responsible Offshore Development Alliance
ROSA	Responsible Offshore Science Alliance
HSEQ	Health, Safety, Environment, and Quality
TERUSA	TotalEnergies Renewables USA LLC
VHF	Very-high frequency
USCG	U.S. Coast Guard

# SECTION 1 – INTRODUCTION

## Plan Overview

TotalEnergies Carolina Long Bay, LLC (“TotalEnergies”), is the leaseholder of Lease Area OCS-A 0545 (“Lease Area”), a 54,937-acre area approximately 22 statute miles from the coast of North Carolina at the closest point. TotalEnergies proposes to construct and operate a wind energy generation facility within the Lease Area called TotalEnergies Carolina Long Bay (“TE-CLB” or “Project”).

TotalEnergies has developed this Fisheries Communications Plan (“Plan”) to outline its commitments and approaches to providing early, open, and transparent two-way communication with commercial and recreational fishing communities (“fishing communities”) and support effective collaboration throughout all stages of the Project.

TotalEnergies is committed to collaborating with the fishing community as early as possible through open lines of communication to collect comprehensive information for the Project from its very beginning. Good collaboration will allow TotalEnergies to use the input and experience of the fishing community to inform Project planning, design and operations while avoiding, minimizing, and mitigating potential impacts to established fishing practices, fisheries, and the environment. As such, TotalEnergies has been engaged in the American Clean Power Association’s (“ACP”) Fisheries Working Group, is a part of the ACP steering committee’s recreational fisheries outreach campaign and is in the process of joining the Responsible Offshore Science Alliance (“ROSA”) Advisory Council.

This Plan will continue to evolve and be updated as TotalEnergies progresses through different stages of the Project. If you would like to receive updated versions of this Plan when it becomes available or would like to sign up for updates, please send an email to Albie Solana, the TE-CLB Fisheries Liaison (“FL”), at [albie.solana@external.totalenergies.com](mailto:albie.solana@external.totalenergies.com).

To learn more about the Project, visit [www.carolinalongbay.com](http://www.carolinalongbay.com). To learn more about TotalEnergies’ commitment to fisheries, visit [www.carolinalongbay.com/fishing-industry/](http://www.carolinalongbay.com/fishing-industry/).

## Points of Contact

TotalEnergies has identified the individuals in Table 1-1 as points of contact for this Plan. These individuals play key roles in the development, implementation, and maintenance of this Plan, as described in Section 3.0, Roles and Responsibilities.

**Table 1-1. TotalEnergies Carolina Long Bay Key Points of Contact**

Name	Role	Contact Information
<b>Albie Solana</b>	Fisheries Liaison – Carolina Long Bay Primary Point of Contact	Address: 1201 Louisiana Street, Ste 1300 Houston, TX 77002  Email: <a href="mailto:albie.solana@external.totalenergies.com">albie.solana@external.totalenergies.com</a>
<b>Jen Banks</b>	Permitting & Development Director - Carolina Long Bay  Secondary Point of Contact	Address: 1201 Louisiana Street, Ste 1300 Houston, TX 77002  Email: <a href="mailto:jen.banks@totalenergies.com">jen.banks@totalenergies.com</a>

## About TotalEnergies Carolina Long Bay

TotalEnergies Carolina Long Bay (“TotalEnergies”) is a wholly owned subsidiary of TotalEnergies Renewables USA, LLC, (“TERUSA”) - part of a global multi-energy company, TotalEnergies SE, that produces and markets energy. TotalEnergies SE has an 15-gigawatt (“GW”) offshore wind development portfolio globally and made its debut into the U.S. offshore wind market via the Bureau of Ocean Energy Management’s (“BOEM”) New York Bight (“NYB”) 2022 lease auction, where rights were obtained for developing the Attentive Energy Project. TERUSA subsequently participated in the BOEM Carolina Long Bay lease auction in May 2022 and obtained rights for Lease Area OCS-A 0545.

## Commitment to Safety

Safety is a core value at TERUSA, who, as an energy provider, strives to be recognized as an industry reference for safety performance across projects and operational activities. All activities undertaken by TERUSA are conducted in accordance with its Code of Conduct and the Safety, Health, Environment & Quality (“HSEQ”) Charter, the primary principle of which states, “TERUSA holds safety, security, health, respect for the environment, customer satisfaction, listening to all stakeholders by way of an open dialogue, as paramount priorities.”

TERUSA is uncompromising when it comes to safety and requires that each individual demonstrate the strictest discipline in preventing accidents and deliberate damage and in protecting health, the environment, and product and service quality while addressing stakeholder expectations.

The TotalEnergies Carolina Long Bay Project will uphold the HSEQ charter and is committed to ensuring protection of the environment, health, and safety of all those involved in its activities. As such, this Plan is not only designed to inform and facilitate collaboration with the fishing community, but also to address any safety concerns associated with the Project and offshore wind development. TERUSA remains committed to identifying and mitigating risks as early as possible and welcomes input from the fishing community on safety-related matters.

## Project Description

The Lease Area (Figure 1-1) is an 54,937-acre area approximately 22 statute miles from its nearest shoreline point in North Carolina. TotalEnergies proposes to construct and operate the Project within the Lease Area. The Project is expected to reach commercial operation date (“COD”) in the early 2030s.

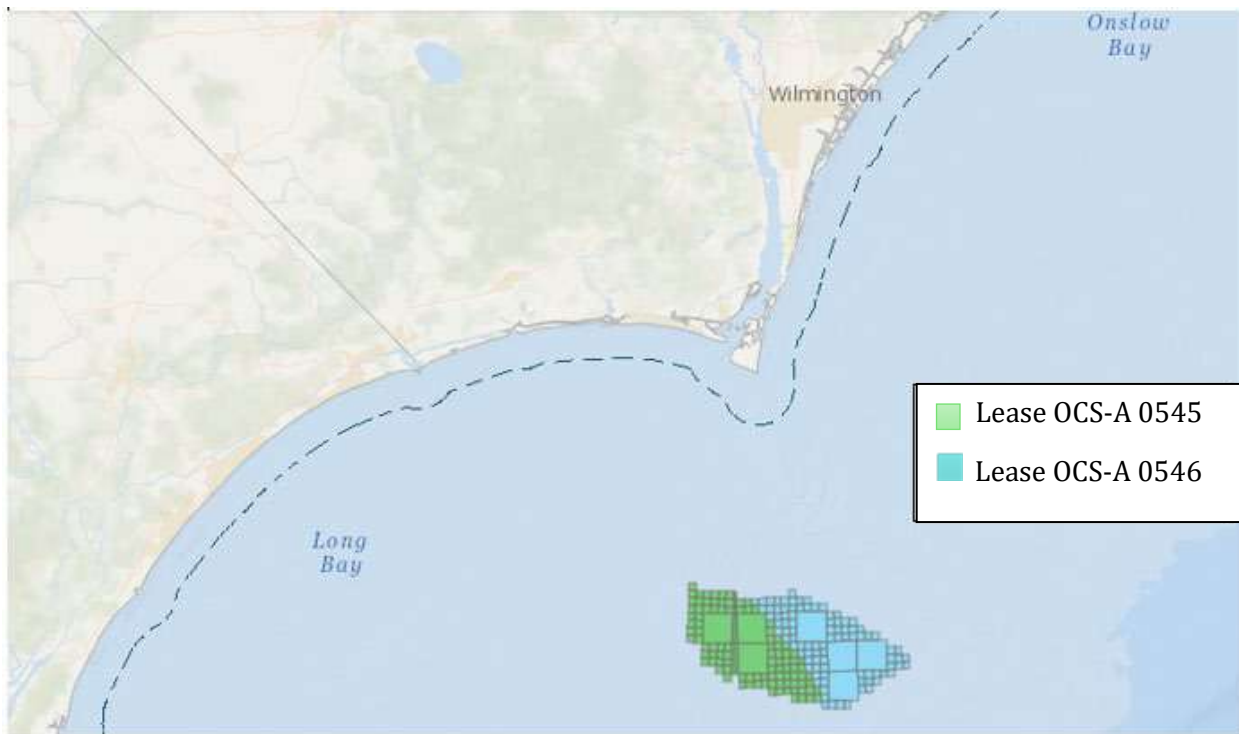


Figure 01. Lease Area OCS-A 0545 (TotalEnergies Renewables USA, LLC) and Lease Area OCS-A 0546 (Duke Energy)

The Lease Area has an average water depth of 77 feet (23.5 meters), with water depths ranging from 59 feet (18 meters) to 102 feet (31 meters), suitable for conventional, bottom-fixed foundations. TotalEnergies may develop and construct offshore wind facilities within the Lease Area in phases, subject to future technical, transmission, and commercial constraints.

TotalEnergies has not yet determined the locations of the electricity grid points of interconnection and associated landfall or offshore export cable routes; however, it is anticipated the Project will interconnect into North Carolina, South Carolina, or both states. These and other design elements will be identified during development stages of the Project and will be informed by input from interested parties, including fishing communities, other ocean users, and regulatory agencies.

### Fisheries Resources

The Carolina Long Bay region is host to species that have contributed to commercial and recreational fishing industries for many years. The seafloor within the Lease Area consists of predominantly soft sediments. Table 1-2 summarizes fish and fisheries species present in the region as observed through North Carolina Department of Environmental Quality's commercial landings data. These species have the potential to occur within the Lease Area.

**Table 1-2. Species within the Carolina Long Bay Region with Potential to Occur in the Lease Area**

<b>Common Name</b>	<b>Scientific Name</b>
Amberjacks	<i>Seriola dumerili</i>
Anglerfish (Monkfish Including Monkfish)	<i>Lophius americanus</i>
Blue Crabs	<i>Callinectes sapidus</i>
Bluefish	<i>Pomatomus saltatrix</i>
Bonito	<i>Sarda sarda</i>
Skipjack	<i>Katsuwonis pelamis</i>
Butterfish	<i>Peprilus triacanthus</i>
Hardhead Catfish	<i>Ariopsis felis</i>
Cobia	<i>Rachycentron canadum</i>
Croaker, Atlantic	<i>Micropogonias undulatus</i>
Cutlassfish, Atlantic	<i>Trichiurus lepturus</i>
Dogfish	<i>Squalus acanthias</i>
Dolphinfish	<i>Coryphaena hippurus</i>
Drum, Black	<i>Pogonias cromis</i>
Drum, Red	<i>Sciaenops ocellatus</i>
Eel, American	<i>Anguilla rostrata</i>
Flounder, Southern	<i>Paralichthys lethostigma</i>
Flounder, Summer	<i>Paralichthys dentatus</i>
Needlefish	<i>Belone belone</i>
Grouper, Gag	<i>Mycteroperca microlepis</i>
Grouper, Red	<i>Epinephelus morio</i>
Hakes	<i>Merluccius spp.</i>
Hogfish (Hog Snapper)	<i>Lachnolaimus maximus</i>
Jacks (Crevalle, Rainbowrunner, Bluerunner)	<i>Carangidae</i>
Mackerel, Atlantic (Boston)	<i>Scomber scombrus</i>
Mackerel, King	<i>Scomberomorus cavalla</i>
Mackerel, Spanish	<i>Scomberomorus maculatus</i>
Oysters	<i>Crassostrea virginica</i>
Scallop, Sea	<i>Placopecten magellanicus</i>
Scup	<i>Stenotomus chrysops</i>
Black Sea Bass	<i>Centropristis striata</i>
Seatrout, Spotted	<i>Cynoscion nebulosus</i>
Shad, American	<i>Alosa sapidissima</i>
Shad, Gizzard	<i>Dorosoma cepedianum</i>
Shad, Hickory	<i>Alosa mediocris</i>
Brown Shrimp	<i>Farfantepenaeus aztecus</i>
Pink Shrimp	<i>Farfantepenaeus duorarum</i>
Skates	<i>Rajidae</i>
Snapper, Red	<i>Lutjanus campechanus</i>
Snapper, Vermilion (Beeliner)	<i>Rhomboplites aurorubens</i>
Spadefish	<i>Chaetodipterus faber</i>
Longfin Squid	<i>Doryteuthis (Amerigo) pealeii</i>
Stone Crabs	<i>Menippe spp.</i>
Striped Bass	<i>Morone saxatilis</i>
Swordfish	<i>Xiphias gladius</i>



Tilefish, Blueline	<i>Caulolatilus microp</i>
Triggerfish	<i>Balistes capriscus</i>
Tuna, Bigeye	<i>Thunnus obesus</i>
Tuna, Bluefin	<i>Thunnus thynnus</i>
Tuna, Yellowfin	<i>Thunnus albacares</i>
Wahoo	<i>Acanthocybium solandri</i>

Source: [2020 Commercial Landings | NC DEQ](#)

### Fishing Communities

TotalEnergies is committed to ongoing engagement with fisheries and marine stakeholders to help inform Project design. As a first step, TotalEnergies will identify and coordinate with individual fishermen and Fisheries Representatives (“FR”) that take part in fishing activities within the Lease Area. TERUSA, through the Attentive Energy Project team has engaged with the Mid-Atlantic Fisheries Management Council and the New England Fisheries Management Council – the TE-CLB Fisheries Liaison will also participate in these groups. Through these efforts, TotalEnergies will identify ports that are used to access the Lease Area for commercial and recreational fishing; fishing parties at those ports will be the target audience for this Plan.

## SECTION 2 – PLAN DEVELOPMENT

### Goals and Objectives

The principal goal of this Plan is to promote meaningful and informative dialogue between TotalEnergies and the fishing communities to build trust, reduce potential conflicts, and align the Project with the relevant BOEM lease stipulations. TotalEnergies has used a variety of resources (see Section 1.1) to create this Plan as a basis to guide outreach, collaboration, and communication activities with the fishing community. This Plan encourages transparency during all phases of Project development to ensure the fishing community is fully engaged early during Project development and remains fully engaged throughout the life of the Project.

The key objectives of this Plan are as follows.

- **Safety:** Identify safety concerns and improve safety for commercial and recreational fishermen who transit through or fish within the Lease Area and along cable routes to shore.
- **Awareness:** Enhance awareness of the Project and the BOEM offshore wind permitting process to emphasize the engagement opportunities for recreational and commercial fishing industries throughout Project planning, permitting, and development.
- **Collaboration:** Incorporate fishing communities' experience into TotalEnergies' decision-making throughout Project planning, design, and development.
- **Science Based:** Use the best available science and data to identify any conflicts with the fishing community and impacts to fisheries resources and ensure those conflicts and impacts have been wholly considered and alleviated wherever feasible.
- **Open and Accountable:** Make available to the commercial and recreational fishing industries consistent and dependable communication channels throughout all phases of the Project.
- **Proactive:** Develop and present a communication strategy that minimizes conflicts and sets a process for resolving conflicts between the fishing communities and the Project.

### Commitment to Fisheries

TotalEnergies values direct local engagement, and its community-minded approach is a core value of the Project. By working collaboratively with marine stakeholders and the fishing community, in-water activities can be optimized to prioritize safety and minimize impacts on fisheries resources.

TotalEnergies is committed to the following principles to maximize collaboration and to minimize impacts between fishing communities and the Project.

- Stakeholder input is welcome at any point during Project development. There are certain times where input is considered especially beneficial to overall Project development. This Plan will reference the overall Project timeline and milestones and identify opportunities for providing input prior to submission of a Construction and Operations Plan ("COP") to BOEM.
- TotalEnergies will consult with the fishing community at the earliest practical juncture to inform Project design features such as turbine spacing, orientation, and cable routes. To

achieve these goals, TotalEnergies will engage in port visits, public meetings, and one-on-one meetings.

- To the extent achievable, TotalEnergies will aim to orient Project turbine rows and space turbines in a way that allows safe navigation, minimizes impacts to fishing in the Lease Area, and balances multiple stakeholder priorities. TotalEnergies recognizes that certain Project design aspects, including the spacing and orientation of turbines, may also be influenced by regulatory agency considerations.
- TotalEnergies will take measures to ensure Project vessels have the protocols in place to avoid fishing gear to the extent possible. To achieve this goal, TotalEnergies plans to use onboard fisheries liaisons (“OFL”) who have established experience in the commercial fishing industry and with the gear types used in proximity to the Lease Area. By capitalizing on this type of experience, TotalEnergies hopes to reduce gear interactions with the commercial fishing industry while also supporting fishermen through OFL employment opportunities.
- Recognizing the possibility of Project-related impacts to the fishing industry in the form of lost or damaged gear, TotalEnergies will develop a publicly available “Gear Loss Claims” process whereby fishermen can submit claims to TotalEnergies. One goal in establishing this process will be to streamline the submission process for claims. Additionally, TotalEnergies will incorporate the insights of the commercial fishing industry into the Gear Loss Claims process by utilizing the experience of its FRs.
- TotalEnergies supports a regional or national compensation fund to compensate for any loss (i.e., lost gear, damaged gear, financial loss, etc) that would occur after implementation of avoidance, minimization, and mitigation measures that will be developed for the Project. TotalEnergies will continue to actively participate in the on-going work among offshore wind developers, BOEM, other federal agencies, coastal states, ACP, the Responsible Offshore Development Alliance (“RODA”), fishing communities, and other stakeholders to develop a centralized, over-arching compensatory mitigation program that addresses foreseeable impacts to fishing and fisheries from offshore wind development.
- TotalEnergies will strive to minimize impacts to fisheries resources from cables and cable protection methods. Potential impacts will be a main point of consideration when identifying locations and installation methods of cables and cable protections, while also recognizing appropriate seabed conditions and technical requirements.
- TotalEnergies’ FL will represent TotalEnergies and will be responsible for communication with the fishing community. The FL serves as a knowledgeable point of contact with whom the fishing community can efficiently and effectively communicate (generally, through FRs, once they are selected).
- TotalEnergies will identify FRs with knowledge of fishing practices and resources prevalent in the Lease Area. FRs will include established and trusted members of the fishing community who can represent those that frequently fish in or transit through the Lease Area.
- TotalEnergies will establish and maintain a webpage aimed at sharing relevant information with the fishing community ([www.carolinalongbay.com/fishing-industry/](http://www.carolinalongbay.com/fishing-industry/)). This Plan, in addition to semi-annual progress reports, Project-specific information, Notices to Mariners, resource information, and studies as they become available, will be made available on the

webpage. The webpage will also include details for on-water activities including a description of activities, dates of the activities, vessel names, and contact information.

- TotalEnergies will work collaboratively with the fishing, scientific and academic communities, as well as state and federal agencies, to advance regional research and monitoring of fisheries and offshore wind interactions in federal waters. The goals of these efforts are to develop robust data on fisheries and increase the understanding of the impacts from wind energy development on fisheries and the ocean ecosystems on which they depend.
- TotalEnergies will follow all recommendations of the USCG with respect to ensuring human safety. TotalEnergies will also implement all aspects of the HSEQ program (see Section 1).
- TotalEnergies will follow all recommendations of BOEM with respect to communicating with fishermen and coordinating Project-related and fishing vessel interactions.

## Guidelines and Requirements

This Plan was developed using lease stipulations for the Lease Area in addition to BOEM guidelines for fisheries best management practices and mitigation measures<sup>1</sup>, fisheries social and economic conditions<sup>2</sup>, and draft fisheries mitigation<sup>3</sup>; recommendations from the Mid-Atlantic Fishery Management Council and New England Fishery Management Council<sup>4</sup>; and communications with the commercial and recreational fishing industries.

## Lease Stipulations

This Plan incorporates stipulations required by BOEM in TotalEnergies commercial lease terms for the Lease Area. Lease stipulations require TotalEnergies to do the following.

- Develop and make publicly available a draft Plan within 120 days of lease execution that describes strategies TotalEnergies intends to use for communicating with commercial and recreational fisheries known to operate in or near the Lease Area.
- Make the draft Plan publicly available within 120 days of lease execution.
- Invite input from those members of the fishing communities to participate in the development of a Plan.
- Update the Plan from time to time in response to feedback obtained through engagement.
- Describe in the Plan:
  - strategies TotalEnergies intends to use for communicating with fishing communities;

---

<sup>1</sup> BOEM. 2014. Development of Mitigation Measures to Address Potential Use Conflicts between Commercial Wind Energy Lessees/Grantees and Commercial Fishermen on the Atlantic Outer Continental Shelf. Final Report on Best Management Practices and Mitigation Measures. Available at: <https://www.boem.gov/sites/default/files/renewable-energy-program/Fishing-BMP-Final-Report-July-2014.pdf>.

<sup>2</sup> BOEM. 2020. Guidelines for Providing Information on Fisheries Social and Economic Conditions for Renewable Energy Development on the Atlantic Outer Continental Shelf Pursuant to 30 CFR Part 585. Available at: <https://www.boem.gov/sites/default/files/documents/about-boem/Social%20%26amp%3B%20Econ%20Fishing%20Guidelines.pdf>.

<sup>3</sup> BOEM. 2022. Guidelines for Mitigating Impacts to Commercial and Recreational Fisheries on the Outer Continental Shelf Pursuant to 30 CFR Part 585. Available at: <https://www.regulations.gov/document/BOEM-2022-0033-0003>.

<sup>4</sup> Moura, S., A. Lipsky, and M. Morse. 2015. Options for Cooperation between Commercial Fishing and Offshore Wind Energy Industries. Available at: <https://osf.io/sfu9e/download>.

- mechanisms to distribute notices through a local “Notice to Mariners” and other outreach (e.g., fisheries management councils, websites, Fisheries Liaisons and/or Fisheries Representatives, state agencies);
  - contact information for TotalEnergies primary point of contact with commercial and recreational fisheries (i.e., the FL);
  - the strategy and general timing of discussions with fishing communities aimed at reducing conflicts between fishing communities and the Project (avoidance, minimization, and mitigation measures); and
  - plans for coordinating with fishing communities to identify peak fishing season and, to the extent practicable, avoid interactions between survey vessels and commercial fishermen in offshore areas.
- Notify ocean users two weeks prior to any geological and geophysical survey activities.
  - Provide annual summaries to BOEM of any filed complaints or claims and outcomes to support their understanding of the frequency and extent of gear interactions.

### **Progress Reports**

TotalEnergies is required by lease stipulations to also submit a progress report every six months (or as BOEM otherwise directs) detailing engagement activities with stakeholders, including the fishing community, during the site assessment term (i.e., until COP approval). The intent of this requirement is to document TotalEnergies communication and transparency with fishing communities and members of the general public that may be potentially affected by Project development activities. Specifically, the progress report must:

- summarize overall progress since the last progress report, or, in the case of the first report, since the Lease effective date;
- identify parties applicable to the Project;
- summarize, and update for subsequent reports, engagement with parties since the previous reporting period;
- document potential adverse effects from the Project to the interests of parties;
- document how, if at all, Project development (including design, implementation, and community investments) has been informed by or altered to address potential adverse effects;
- describe any anticipated or scheduled engagement activities for the next reporting period;
- summarize feedback from engagement with parties on transmission planning (prior to proposing any export cable route); and
- provide information that can be made available to the public and posted on the BOEM website.

If BOEM provides comments on the progress report (within 60 calendar days from receipt), TotalEnergies will address comments and modify the progress report.

## Revisions to the Plan

This Plan will be managed as a “living document” that will be modified and adapted over the life of the Project. In addition to lease requirements, TotalEnergies will undertake annual reviews to ensure the Plan is effectively accomplishing its stated goals and objectives.

TotalEnergies welcomes stakeholder feedback and invites any stakeholder to suggest modifications or amendments to the Plan. In the absence of unsolicited stakeholder feedback, TotalEnergies will proactively engage with fishing communities to assess this Plan’s effectiveness and identify any pertinent modifications. These changes will be noted in subsequent updates and summarized in semi-annual progress reports to BOEM.

## SECTION 3 – ROLES AND RESPONSIBILITIES

A crucial component to ensure outreach success is TotalEnergies commitment to build a fisheries outreach team, which currently consists of the Fisheries Liaison (“FL”), Albie Solana. To the greatest extent possible, the FL and Fisheries Representatives (“FRs”) will proactively engage with fishing communities identified in this Plan, with the goal of providing the fishing community early and frequent opportunities for meaningful input throughout all phases of Project planning and development.

The FL and FRs will remain in close contact with the commercial and recreational fishing industries and each other to keep information-sharing open and up to date throughout the Project’s progress. Specific roles for the FL and FRs are described in the following sections.

### Fisheries Liaison

TotalEnergies has hired a FL for the Project, Albie Solana, as the principal outreach representative for the fishing communities operating in and near the Lease Area. Albie is the primary point of contact for this Plan (see Table 1-1 for contact information) and will be responsible for its implementation.

FL responsibilities include the following:

1. Update and refine the Plan in coordination with TotalEnergies Project management and technical teams and with input from the fishing community, BOEM, National Marine Fisheries Service (“NOAA Fisheries”) and other federal agencies, state agencies, and the South Atlantic Fisheries Management Council.
2. Create, expand, and sustain a single source for fishing community contacts, community-wide FL and FR contacts, fisheries management state agencies, councils, commissions, harbor masters, and industry associations.
3. Engage and collaborate with the fishing community on TotalEnergies’ ongoing activities and the efficacy of the Plan and make improvements wherever possible.
4. Identify strategies to avoid, minimize, and mitigate resource conflicts from the Project through early and frequent communications to the fishing community. These strategies may include the following.
  - a. Organize and distribute timely updates on Project-related vessel traffic through FRs, TotalEnergies website, social media outlets, text message alerts, Notice to Mariners, and very-high frequency (“VHF”)-marine radio channels.

- b. Provide updated vessel identification for Project-related vessels, details of the on-water work being conducted, and clearance warnings as needed based on the requirements of the activities being conducted.
  - c. Advise fishermen on the removal of static gear when survey or construction activities could present a risk of damage.
5. Work with FRs and the fishing community on the planning and timing of Project-related surveys and construction and operations activities to design a plan for reducing the potential for damage to fishing gear to the maximum extent possible. This coordination will include discussions to identify peak fishing seasons and, to the extent practicable, methods for avoiding offshore interactions between survey vessels and commercial fishermen.
6. Assemble and facilitate meetings with the fishing community to understand the potential impacts of the Project on their industry.
7. Communicate to TotalEnergies' Project management and technical teams the concerns of the fishing community in a well-timed manner to allow for a swift response.
8. Work with FRs to facilitate an exchange of information to and from the fishermen or fishing community they represent.
9. Develop relationships in all ports within the scope of the Project to ensure two-way communication is established.
10. Promptly respond to the commercial and recreational fishing industries' concerns.

### **Fisheries Representatives**

TotalEnergies will identify qualified FRs with personal experience with the fishing communities that use the Lease Area. TotalEnergies' communications with the fishing community will be led by the FL; however, FRs will help support the exchange of information.

FRs represent commercial and recreational fishing industries by bringing information and ideas to the FL. FRs do not work directly for TotalEnergies; rather, they represent their respective fishing communities to collect information about Project and resource concerns from their communities and report this information to the FL. When appropriate, FRs will help distribute Project information from the FL to their fishing communities.

It is TotalEnergies' goal to develop a network of FRs to maximize coverage of the fishing community from both a geographical and gear type perspective. TotalEnergies is committed to working with as many FRs as needed to have satisfactory representation throughout the Project's scope.

FR responsibilities include the following:

1. Provide the FL all feedback and information from the fishing community that may inform or improve this Plan.
2. Be well-versed on commercial and recreational fishing gear types, targeted species, sectors, patterns, and seasonal shifts relevant to the Project.
3. Document and maintain, in consultation with the FL, points of contact and contact information for the fishing community, FLs and FRs, and fisheries management state agencies, councils, commissions, harbor masters, and industry associations.



4. Maintain a log of all contacts made with fishing vessels in and around the Lease Area, along with the type of fishing being conducted, the gear type being used, species being targeted, vessels being used, and other pertinent details.
5. Inform and maintain a calendar of upcoming commercial and recreational fisheries events and meetings applicable to TotalEnergies.
6. Assist the FL in distributing updated Project information to the fishing community in their region and help facilitate communication between the FL and the fishing community.
7. Stay current on all recreational and commercial fishing activities and concerns in their region and report any conflicts promptly to the FL.
8. Enhance and promote an understanding of safe fishing practices within the Lease Area via communication to the broader recreational and commercial fishing communities within the region.
9. Remain impartial on any claims of liability or admission of responsibility for the commercial and recreational fishing gear claims submitted to TotalEnergies.
10. Report to the FL, via weekly FR reports, all concerns that have been brought to their attention by the fishing communities while preserving confidentiality of those who have expressed concern and supporting the integrity of the Project.

### **Onboard Fisheries Liaisons**

TotalEnergies will identify OFLs who are familiar with the marine operations and fishing behaviors of the region. OFLs will be used, as practicable, during Project-related vessel operations, such as during offshore surveys and construction activities. The OFL will be contracted for the duration of vessel operation and will report to the FL.

OFL responsibilities include the following.

1. Aid survey and construction vessel captains with communication to fishing vessels within and near the Lease Area and document any existing fishing gear.
2. Ensure efficient and effective communication on-site and in real time during on-the-water offshore wind activities taking place within the Lease Area.
3. Record any observed fishing activities taking place within the Lease Area and confirm Project vessels are operated in accordance with this Plan.
4. Actively seek to avoid negative interactions with fishing gear and use VHF-marine radio to communicate with fishermen when potential gear interactions are identified.
5. In the event of a negative gear interaction, coordinate with the FL to resolve the situation safely and in a manner that is efficient and fair to all involved parties.

## **SECTION 4 – ENGAGEMENT APPROACHES**

TotalEnergies has identified a variety of engagement approaches that will be used to facilitate communication between the fishing community and the Project team and achieve the engagement objectives outlined in this Plan.



As TotalEnergies gains further insight into the fishing activities taking place within the Lease Area, it will refine its engagement approaches and further focus on outreach to specific fishing communities that would be directly affected by Project activities.

### Approaches for Achieving Engagement Objectives

TotalEnergies agrees that effective dialogue and consultation is the key to maximizing understanding while minimizing conflicts. TotalEnergies strives to connect with any affected or interested fishermen, and to ensure that these fishermen will continue to be involved and updated as the Project progresses. To achieve the engagement objectives outlined in Section 2.1, Goals and Objectives, TotalEnergies will implement the following approaches.

- **Target audience:** The target audience for the Project and this Plan includes those fishermen who participate in fisheries activities in the region. To track such a vast industry, TotalEnergies will establish a comprehensive list of contacts among commercial and recreational fishermen, local and regional fisheries associations, councils, commissions, harbor masters, and other industry organizations.
- **Principle engagement channels:** To support engagement, the TotalEnergies FL will coordinate through established FRs to ensure that outreach and engagement activities are targeted to the correct audiences. Additionally, the FL will use a variety of methods to ensure successful and effective outreach: email, flyers, thumb drives, port agents, fishermen, newspapers, internet, and the TotalEnergies website: [www.carolinalongbay.com/fishing-industry/](http://www.carolinalongbay.com/fishing-industry/).
- **Engagement support tools and strategies:** TotalEnergies will use a variety of tools and implement appropriate strategies to support engagement with fishing communities. These tools and strategies will include the following:
  - Provide access to electronic Project and engagement information via the TotalEnergies website ([www.carolinalongbay.com/fishing-industry/](http://www.carolinalongbay.com/fishing-industry/)), email lists, and social media.
  - Publish Project information in industry-specific publications (e.g., trade magazines).
  - Provide a 24-hour phone service for up-to-date Project information and for reporting emergencies.
  - Broadcast Project alerts to fishermen at sea through VHF-marine radio.
  - Make available the FL contact information in this Plan, on the TotalEnergies website, and through other communication channels, as summarized above.

All in-person events are subject to safety and proper authorization from local authorities. Should in-person events not be possible, TotalEnergies will host virtual events.

### Key Performance Indicators

Key performance indicators (“KPI”) are a set of quantifiable measurements or metrics used to gauge a company or organization’s overall, long-term performance in implementing a plan or program. In the context of this Plan, KPIs will be used to track TotalEnergies performance in conducting fisheries engagement activities for the Project. For each phase of the Project, TotalEnergies will track the following KPIs.

## Fisheries Communications Plan: TotalEnergies Carolina Long Bay

- The FRs or fishing communities participating in Plan activities.
- The number of engagement activities/actions completed compared to the number described in the Plan.
- Significant outcomes of engagement activities, including people reached, feedback received, issues or concerns identified, and decisions made.

TotalEnergies will share fisheries engagement activities within the biannual Progress Reports (see Section 2) submitted to BOEM and on the BOEM website (<https://www.boem.gov/renewable-energy/state-activities/carolina-long-bay>). TotalEnergies will also solicit feedback and recommendations from the fishing communities on how to improve the Plan and its implementation.

## SECTION 5 – ENGAGEMENT ACTIVITIES

TotalEnergies has actively engaged the fishing and mariner communities through in-person visits, surveys, and multi-platform communications to introduce the Project, identify early concerns, answer questions to the extent possible, and build sustainable relationships.

TotalEnergies will engage with FRs and fishing communities through a variety of engagement activities. **Table 5-1** summarizes the types of engagement activities TotalEnergies will use to communicate, collaborate, and coordinate with fishing communities.

**Table 5-1. Types of Engagement Activities for the Project**

Engagement Activity	Description
<b>Virtual Meetings</b>	<p>TotalEnergies will host virtual meetings with fishing communities and marine stakeholders. The meetings may include, but not be limited to, the following components.</p> <ul style="list-style-type: none"> <li>• An opening statement by the fishing community and TotalEnergies</li> <li>• A review of progress made (i.e., Progress Reports) since previous meeting and updates on any related TotalEnergies action(s)</li> <li>• Knowledge/information sharing and listening/feedback sessions between fishermen and TotalEnergies</li> <li>• A question-and-answer session</li> </ul> <p>Meeting format will be determined in consultation with the fishing community and other attendees.</p>
<b>In-Person Meetings</b>	<p>TotalEnergies will host in-person meetings with fishing communities and marine stakeholders. The meeting formats will vary, depending on need, and may include, but not be limited to, the following.</p> <ul style="list-style-type: none"> <li>• Representatives from TotalEnergies will actively participate in joint port hours hosted by offshore wind developers to engage with fishing communities, answer questions, and address concerns, as needed.</li> <li>• TotalEnergies will engage with the South-Atlantic Fisheries Management Council to familiarize the Project team with the larger fishing community and fishing-related activities.</li> <li>• TotalEnergies will hold in-person meetings with fisheries stakeholders, identified with the help of its FRs, to discuss fishing activity and other marine uses within and adjacent to the Lease Area.</li> </ul>
<b>Website Updates</b>	<p>TotalEnergies will regularly update its project website with information and news about the Project.</p>
<b>Other</b>	<p>Other engagement activities may include identification of new Project team members or FRs to support coordination with fishing communities; distribution of hardcopy or digital letters and invitations to participate in survey planning calls or other Project-related meetings or events; development and distribution of plans, progress reports, documents, tools, or other materials; attendance or support for fishing-related events; participation in other Project related and/or community engagement activities; and execution of other outreach and information gathering and sharing activities.</p>

Key:

FR-fisheries representative

## Fisheries Communications Plan for the Attentive Energy Offshore Wind Project

Table A-1 (Attachment A) summarizes the specific engagement activities that are anticipated to take place during different stages of the Project. TotalEnergies' FL will maintain and update engagement information and share this information within the biannual Progress Reports (see Section 2). TotalEnergies will only use this information for fisheries outreach activities and will not make any personal information available to the general public. TotalEnergies understands that some fisheries information, such as fishing sites, can be commercially sensitive. As needed to best understand fishermen's specific concerns or potential impacts, TotalEnergies will work with the individual fishing organization or fisherman to establish confidentiality agreements for the purpose of sharing information.

## **SECTION 6 – CONCLUSION**

TotalEnergies believes fishing communities can and should play an important role in the development of the offshore wind industry in the United States. Therefore, developing this Plan and identifying approaches and activities for achieving engagement objectives is one of many steps in building a meaningful and productive relationship with fishing communities. Through regular and meaningful engagement, trust can be built, potential conflicts can be reduced or avoided, and parties can successfully work together to deliver offshore wind opportunities to strengthen and empower communities, forge a new industry, and build an inclusive clean energy economy.

**Table A-1. Fisheries Engagement Activities, Approaches, and Key Performance Indicators**

Engagement Approach by Project Phase	Engagement Activity (virtual meeting, meeting, email, website update, other)	Planned/ Progress/ Completed	In Timing/ Frequency	Description/ Topics Discussed
Fisheries Liaison	Outreach and Engagement Support	Completed	January 2023	TotalEnergies will hire a dedicated Fisheries Liaison.
Fisheries Representatives	Outreach and Engagement Support	In Progress	On-going	TotalEnergies will identify a network of Fisheries Representatives with established relationships with fishing communities in and around the Lease Area.
Fishing Community	Outreach and Engagement Support	In Progress	On-going	TotalEnergies will gather contact information for and establish contacts with the fishing community and fisheries management state agencies, councils, commissions, harbor masters, industry associations and other stakeholders.
Plan submission and invitation for feedback	Distribution of Plan; Website	In Progress	Q2 2023	TotalEnergies will draft a comprehensive and detailed Plan.
Revised Plan submission	Distribution of Plan; Website	Planned	As needed over the life of the Project	TotalEnergies will revise the plan, as appropriate, to incorporate feedback received.
Project update communications	Progress Report; Website	Planned	On-going; starting in 2023	TotalEnergies will provide fishing communities regular Project site assessment and characterization updates through emails and website updates. TotalEnergies will submit progress reports every 6 months (or as BOEM otherwise directs) summarizing engagement activities with fishing communities and stakeholders during the site assessment term.
Project update meetings with FRs and others	Virtual or In-Person Meetings	Planned	On-going; starting in 2023	TotalEnergies will meet with FRs, once identified, and other parties virtually or in-person (as preferred, agreed upon, and/or requested by the FR or party) to share Project site assessment and characterization updates and to solicit feedback on or share results from Project plans, studies, surveys, communications, or other relevant topics.
Project and resource information sharing	Information Gathering and Sharing	In Progress	On-going	Develop outreach materials including non-promotional fact sheets on issues of concern to the fishing community, science-based resources on offshore wind development, and Project-specific information to support TotalEnergies' commitments to fisheries engagement.
Attend community events	In-Person Meetings; Information Gathering and Sharing	In Progress	On-going; starting in 2023	Collaborate with other offshore wind developers by co-hosting regularly scheduled port hours to attend and be available to answer questions posed by the fishing community.
Attend fisheries management meetings	In-Person Meetings; Information Gathering and Sharing	In Progress	On-going; starting in 2023	The FL for TotalEnergies will attend fisheries management meetings, as appropriate for the meeting agenda, to provide updates and engage with fishing industry leaders.
Implement gear loss claims procedure	Tool	In Progress	Prior to significant survey operations	Develop guidelines for gear interactions and a streamlined "Gear Loss Claims" procedure whereby fishermen can submit claims to TotalEnergies.
Identify key information outlets	Information Gathering and Sharing	In Progress	On-going	Identify key information outlets trusted by the fishing community for disseminating information about TotalEnergies and the Project. These outlets may include trade journals, blogs, websites, local newspapers, and third-party spokespersons.
Notice to Mariners	Tool; Information Gathering and Sharing	Planned	As needed in conjunction with on-water activities	Distribute a Notice to Mariners two (2) weeks prior to commencement of surveys.